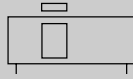


Magnet type rodless cylinder

- Basic type (guided type) **MRL2-(F)** Series
 - Simplified guide type, 1 piston type **MRL2-G(F)** Series
 - Simplified guide type, 2 piston type **MRL2-W(F)** Series
- Bore size: $\phi 6$, $\phi 10$, $\phi 16$, $\phi 20$, $\phi 25$, $\phi 32$

JIS symbol



Specifications

Descriptions		MRL2 (L,F) , MRL2-G (L,F) , MRL2-W (L,F)					
Bore size	mm	$\phi 6$	$\phi 10$	$\phi 16$	$\phi 20$	$\phi 25$	$\phi 32$
Actuation		Double acting					
Working fluid		Compressed air					
Max. working pressure	MPa	0.7					
Min. working pressure	MPa	0.3 (Note 1)			0.2		
Withstanding pressure	MPa	1.05					
Ambient temperature	°C	-10 to 60 (fine speed type: 5 to 60) (no freezing)					
Port size		M5			Rc1/8		
Stroke tolerance	mm	+ 1.5 0 (to 1000)			+ 2.0 0 (to 1500)		
Working piston speed	mm/s	50 to 500 (fine speed type: 1 to 200)					
Cushion		Rubber cushion					
Lubrication		Not required (when lubricating, use turbine oil ISO VG32) but not for fine speed type.					
Magnet holding force (Note 2)	N	19	63	166	294	350	574
Adjustable stroke range (single) (Note 3)	mm	3	4	6	8.5	10	10

Note 1: For MRL2-G-6-C (shock absorber), the value is 0.4.

Note 2: The values of simplified guide type, two piston type (W) is double.

Note 3: For MRL2 (basic type), adjustable stroke is not available.

Stroke length

Bore size (mm)	Standard stroke length (mm)	Max. stroke length (mm)	Max. stroke length of type with switch (mm)	Max. stroke length of common porting with switch (mm)	Max. stroke length of fine speed type (mm)	Min. stroke length (mm)
$\phi 6$	50, 100, 150, 200	300	200	-	300	1
$\phi 10$	50, 100, 150, 200, 250, 300	500	300	300	500	
$\phi 16$	100, 150, 200, 250, 300, 400, 500	1000	500	500	800	
$\phi 20$	200, 250, 300, 350, 400, 500, 600, 700	1500	700	700	800	
$\phi 25$	200, 250, 300, 350, 400, 500, 600, 700	1500	700	700	800	
$\phi 32$	200, 250, 300, 350, 400, 500, 600, 700	1500	700	700	700	

■ Custom stroke length is available per 1mm increment.

T type switch quantity and min. stroke length (mm)

Switch quantity	1				2				3				4			
	T*V	T*H	T*Y*V	T*Y*H	T*V	T*H	T*Y*V	T*Y*H	T*V	T*H	T*Y*V	T*Y*H	T*V	T*H	T*Y*V	T*Y*H
Switch model no.																
Bore size (mm)																
$\phi 6$ or equivalent	5	5	5	5	20	50	40	70	40	85	71	115	60	120	101	160
$\phi 10$ or equivalent	5	5	5	5	20	50	40	70	40	85	71	115	60	120	101	160
$\phi 16$ or equivalent	5	5	5	5	20	50	40	70	40	85	71	115	60	120	101	160
$\phi 20$ or equivalent	5	5	5	5	20	50	40	70	40	85	71	115	60	120	101	160
$\phi 25$ or equivalent	5	5	5	5	20	50	40	70	40	85	71	115	60	120	101	160
$\phi 32$ or equivalent	5	5	5	5	20	50	40	70	40	85	71	115	60	120	101	160

Switch specifications

- 1 color/2 color indicator

Descriptions	Proximity 2 wire			Proximity 3 wire		
	T1H/T1V	T2H/T2V	T2YH/T2YV	T3H/T3V	T3PH/T3PV (Custom order)	T3YH/T3YV
Applications	Programmable controller, relay, small solenoid valve		Programmable controller	Programmable controller, relay		
Output method	-			NPN output	PNP output	NPN output
Power voltage	-			10 to 28 VDC		
Load voltage	85 to 265 VAC	10 to 30 VDC		30 VDC or less		
Load current	5 to 100mA	5 to 20mA (Note 1)		100mA or less		50mA or less
Light	LED (ON lighting)	LED (ON lighting)	Red/green LED (ON lighting)	LED (ON lighting)	Green LED (ON lighting)	Red/green LED (ON lighting)
Leakage current	1mA or less with 100 VAC 2mA or less with 200 VAC	1mA or less		10 μA or less		

- With preventive maintenance output

Descriptions	Proximity 3 wire	Proximity 4 wire	Proximity 3 wire	Proximity 4 wire
	T2YFH/V	T3YFH/V	T2YMH/V	T3YMH/V
Applications	Programmable controller	Programmable controller	Programmable controller	Programmable controller
Output method	NPN output			
Light	Installation position adjustment	Red/green LED (ON lighting)		
	Preventive maintenance output	-	Yellow LED (ON lighting)	
Regular	Power voltage	-	10 to 28 VDC	-
	Load voltage	10 to 30 VDC	30 VDC or less	10 to 30 VDC
	Load current	5 to 20mA	50mA or less	5 to 20mA
	Leakage current	1mA or less	10 μA or less	1.2mA or less
Preventive maintenance output	Load voltage	30 VDC or less		
	Load current	20mA or less	50mA or less	5 to 20mA or less
	Leakage current	10 μA or less		

Note 1: Refer to Ending 1 for other switch specifications.

Note 2: Maximum load current above: 20mA at 25 °C. The current will be lower than 20mA if ambient temperature around switch is higher than 25 °C. (5 to 10mA when 60 °C)

Cylinder weight

Unit (g)

Model no.	Without switch		With switch		Common porting type with switch	
	Product weight when stroke length = 0mm	Additional weight per S = 100mm	Product weight when stroke length = 0mm	Additional weight per S = 100mm	Product weight when stroke length = 0mm	Additional weight per S = 100mm
MRL2-6	73	13	103	39	-	-
MRL2-10	143	28	169	48	-	-
MRL2-16	278	43	313	63	-	-
MRL2-20	542	85	587	105	-	-
MRL2-25	954	98	1017	128	-	-
MRL2-32	1230	195	1301	225	-	-
MRL2-G-6	193	28	223	54	-	-
MRL2-G-10	368	53	394	73	411	94
MRL2-G-16	635	85	670	105	691	126
MRL2-G-20	1197	155	1242	175	1269	196
MRL2-G-25	1852	196	1915	226	1997	289
MRL2-G-32	2297	390	2368	420	2455	483
MRL2-W-6	203	28	233	54	-	-
MRL2-W-10	398	53	424	73	441	94
MRL2-W-16	710	85	745	105	766	126
MRL2-W-20	1367	155	1412	175	1439	196
MRL2-W-25	2206	196	2269	226	2351	289
MRL2-W-32	2859	390	2930	420	3017	483

Note: The switch weight is not included in the product weight of the switch type and common piping type with switch.

Clean room specifications

(Catalog No. CB-033SA)

- Dust preventive structure for inside the clean room

MRL2 - * - - P72

MRL2 - * - - P52

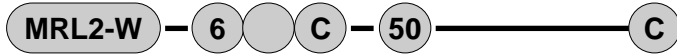
SCP*2
CMK2
CMA2
SCM
SCG
SCA2
SCS
CKV2
CA/OV2
SSD
CAT
MDC2
MVC
SMD2
MSD*
FC*
STK
ULK*
JSK/M2
JSG
JSC3
USSD
USC
JSB3
LMB
STG
STS/L
LCS
LCG
LCM
LCT
LCY
STR2
UCA2
HCM
HCA
SRL2
SRG
SRM
SRT
MRL2
MRG2
SM-25
CAC3
UCAC
RCC2
MFC
SHC
GLC
Ending

Magnet type rodless cylinder
Rodless type

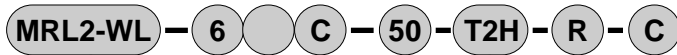
MRL2/MRL2-W Series

How to order

Without switch



With switch



A Model no.

B Bore size

C Port thread type
Note 1

D Cushion
Note 2

E Stroke length
Note 3

F Switch model no.
* indicates lead wire length.
Note 5

G Switch quantity

H Option
Note 6



Note on model no. selection

Note 1: The following piping threads are available for the rubber cushion (no symbol) type.
NPT thread: NN, G thread: GN

Note 2: When "C" rubber and air cushioned, for MRL2-G and W, adjustable stroke by moving stopper may affect that rubber-air cushion does not function.

Note 3: Refer to the table below for the max. stroke length of the type with a switch.

Note 4: Refer to page 2178 for maximum stroke length of fine speed type.

Note 5: Switches other than F switch model no. are available. (Custom order) Refer to Ending 1 for the details.

Note 6: For "R" common porting type with switch, select a model with switch (MRL2*L).

Bore size (mm)	Max. stroke length of type with switch (mm)
φ 6	200
φ 10	300
φ 16	500
φ 20	700
φ 25	700
φ 32	700

<Example of model number>

MRL2-WL-10-50-T2H-R-C

Model: Rodless cylinder

- A** Model no. : Simplified guide type 2 piston type
- B** Bore size : φ10mm
- C** Port thread type : Rc thread
- D** Cushion : Rubber cushion
- E** Stroke length : 50mm
- F** Switch model no. : Proximity switch T2H
- G** Switch quantity : One on R side
- H** Option : With shock absorber

Symbol	Descriptions
A Model no.	
Basic type	MRL2 Without switch
	MRL2-L With switch
	MRL2-F Fine speed type
	MRL2-LF Fine speed type with switch
Simplified guide type 1 piston type	MRL2-G Without switch
	MRL2-GL With switch
	MRL2-GF Fine speed type
Simplified guide type 2 piston type	MRL2-GLF Fine speed type with switch
	MRL2-W Without switch
	MRL2-WL With switch
	MRL2-WF Fine speed type
	MRL2-WLF Fine speed type with switch

B Bore size (mm)	
6	φ 6
10	φ 10
16	φ 16
20	φ 20
25	φ 25
32	φ 32

C Port thread type	
Blank	Rc thread
N	NPT thread (φ 25 and over) (custom order)
G	G thread (φ 25 and over) (custom order)

D Cushion	
Blank	Rubber cushion
C	Rubber-air cushion

E Stroke length (mm)		
Bore size	Stroke length Note 4	Custom stroke length
φ 6	1 to 300	Per 1 mm increment
φ 10	1 to 500	
φ 16	1 to 1000	
φ 20 to φ 32	1 to 1500	

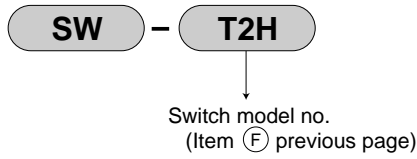
F Switch model no.				
Axial lead wire	Radial lead wire	Contact	Indication	Lead wire
T1H*	T1V*	Proximity	1 color indicator type	2-wire
T2H*	T2V*			3-wire
T3H*	T3V*			2-wire
T2YH*	T2YV*	Proximity	2 color indicator type	2-wire
T3YH*	T3YV*			3-wire
T3PH*	T3PV*			1 color indicator type (custom order)
T2YFH*	T2YFV*			2 color indicator type (w/o light for preventive maintenance output)
T3YFH*	T3YFV*	Proximity	2 color indicator type (w/ light for preventive maintenance output (1 color))	4-wire
T2YMH*	T2YMV*			3-wire
T3YMH*	T3YMV*			4-wire

*Lead wire length	
Blank	1m (standard)
3	3m (option)
5	5m (option)

G Switch quantity	
R	One on R side
L	One on L side
D	Two
T	Three
4	Four (When more than 4 pieces, indicate switch quantity.)

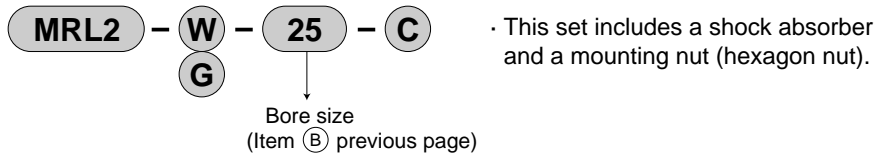
H Option	
C	With shock absorber (Basic type can not be selected.)
S	With scraper (The fine speed type can not be selected.)
R	Common porting type with switch (Basic type and φ 6 can not be selected.)

How to order switch



How to order discrete shock absorber

Used when changing from standard type to type with shock absorber.



Applicable shock absorber model no.

Model	Shock absorber model no.
MRL2-W-6, MRL2-G-6	NCK-00-0.1
MRL2-W-10, MRL2-G-10	NCK-00-0.1-C
MRL2-W-16, MRL2-G-16	NCK-00-0.3-C
MRL2-W-20, MRL2-G-20	NCK-00-0.7-C
MRL2-W-25, MRL2-G-25	NCK-00-1.2-C
MRL2-W-32, MRL2-G-32	NCK-00-1.2-C

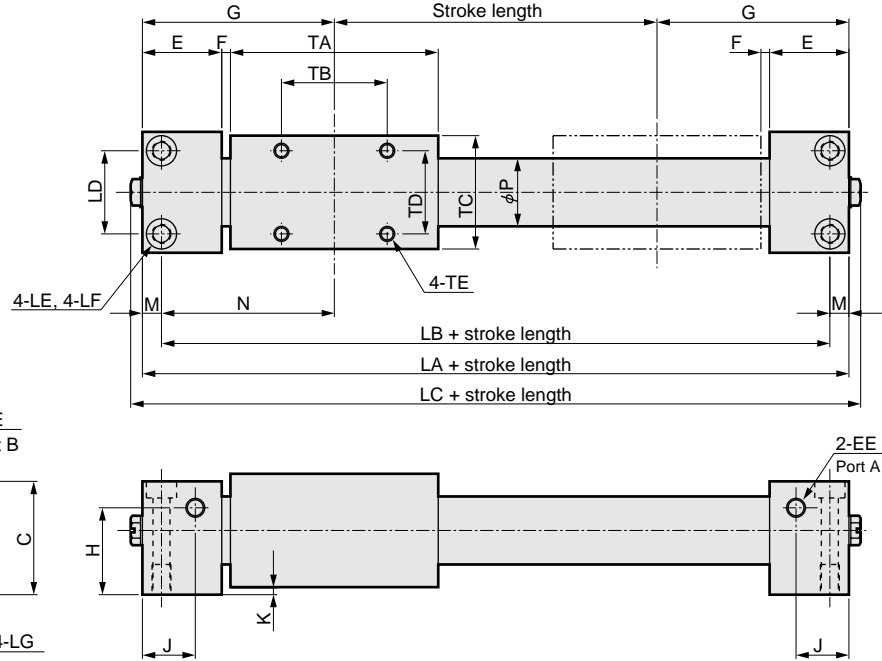
SCP*2
CMK2
CMA2
SCM
SCG
SCA2
SCS
CKV2
CA/OV2
SSD
CAT
MDC2
MVC
SMD2
MSD*
FC*
STK
ULK*
JSK/M2
JSG
JSC3
USSD
USC
JSB3
LMB
STG
STS/L
LCS
LCG
LCM
LCT
LCY
STR2
UCA2
HCM
HCA
SRL2
SRG
SRM
SRT
MRL2
MRG2
SM-25
CAC3
UCAC
RCC2
MFC
SHC
GLC
Ending

Magnet type rodless cylinder
Rodless type

Dimensions: MRL2 (basic type)



● MRL2 (basic type) without switch



Note: Air piping port A, B can be selected.
 A plug is assembled to Port B at shipment.
 · $\phi 6$ to $\phi 20$: Plug (FPL-M5)
 · $\phi 25, \phi 32$: Hexagon socket head tapered screw plug

Symbol	Dimensions					Installation dimensions								
	LA	LC	A	C	D	LB	LD	LE	LF	LG	TB	TD	TE	
$\phi 6$	74	80.2	20	16.5	20	68	14	$\phi 3.5$	-	M4 depth 6	20	12	M3 depth 4.5	
$\phi 10$	80	86.2	26	24	26	72	18	$\phi 3.5$	$\phi 6.5$ spot face depth 3.3	M4 depth 8	20	18	M3 depth 4.5	
$\phi 16$	102	108.2	32	30	32	92	22	$\phi 4.5$	$\phi 8$ spot face depth 4.4	M5 depth 8	28	22	M4 depth 6	
$\phi 20$	128	134.2	38	36	38	116	26	$\phi 5.5$	$\phi 9.5$ spot face depth 5.4	M6 depth 12	44	26	M4 depth 6	
$\phi 25$	130	132.2	52	45	48	118	40	$\phi 5.5$	$\phi 9.5$ spot face depth 5.4	M6 depth 12	40	30	M6 depth 6	
$\phi 32$	138	140.2	60	53	56	124	46	$\phi 6.9$	$\phi 11$ spot face depth 6.5	M8 depth 12	40	40	M6 depth 9	

Symbol	General dimensions												
	B	E	EE	F	G	H	J	K	M	N	P	TA	TC
$\phi 6$	11	15	M5 depth 4	2	37	9	9.5	2	3	34	7.6	40	18
$\phi 10$	14	18	M5 depth 4	2	40	5.5	10	2	4	36	12	40	24
$\phi 16$	17	21	M5 depth 4	2.5	51	23	14	2	5	46	18	55	30
$\phi 20$	20	24	M5 depth 4	3	64	28	15.5	2	6	58	23	74	36
$\phi 25$	25.5	27	Rc1/8	3	65	29	17	3	6	59	28	70	45
$\phi 32$	29.5	27	Rc1/8	3	69	37	17	3	7	62	35	78	53

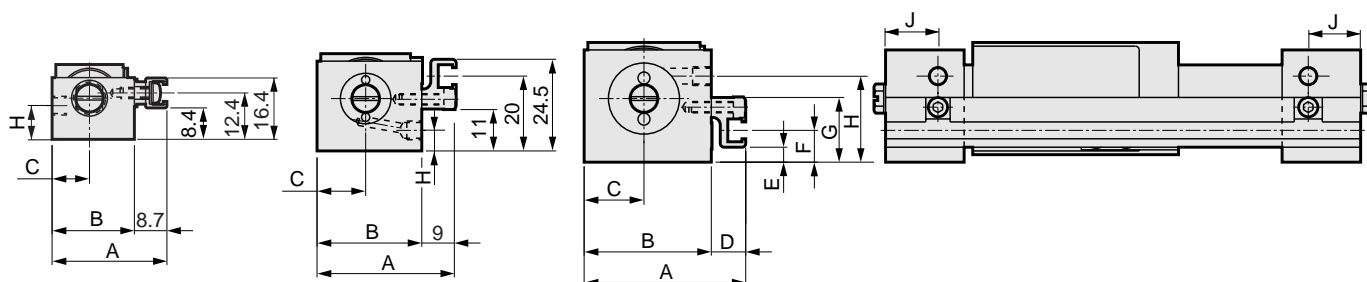
Dimensions: MRL2 (basic type)

● MRL2-L (basic type) with switch

● For $\phi 6$

● For $\phi 10$

● For $\phi 16$ to $\phi 32$



Symbol	A	B	C	D	E	F	G	H	J
Bore size (mm)									
$\phi 6$	30.7	22	10	-	-	-	-	9	9.5
$\phi 10$	37	28	13	-	-	-	-	5.5	10
$\phi 16$	43	34	16	9.0	4	8.5	17.3	23	14
$\phi 20$	49	40	19	9.0	9	13.5	22.3	28	15.5
$\phi 25$	60.7	52	26	8.7	2	7.5	21	29	17
$\phi 32$	68.7	60	30	8.7	10	15.5	29	37	17

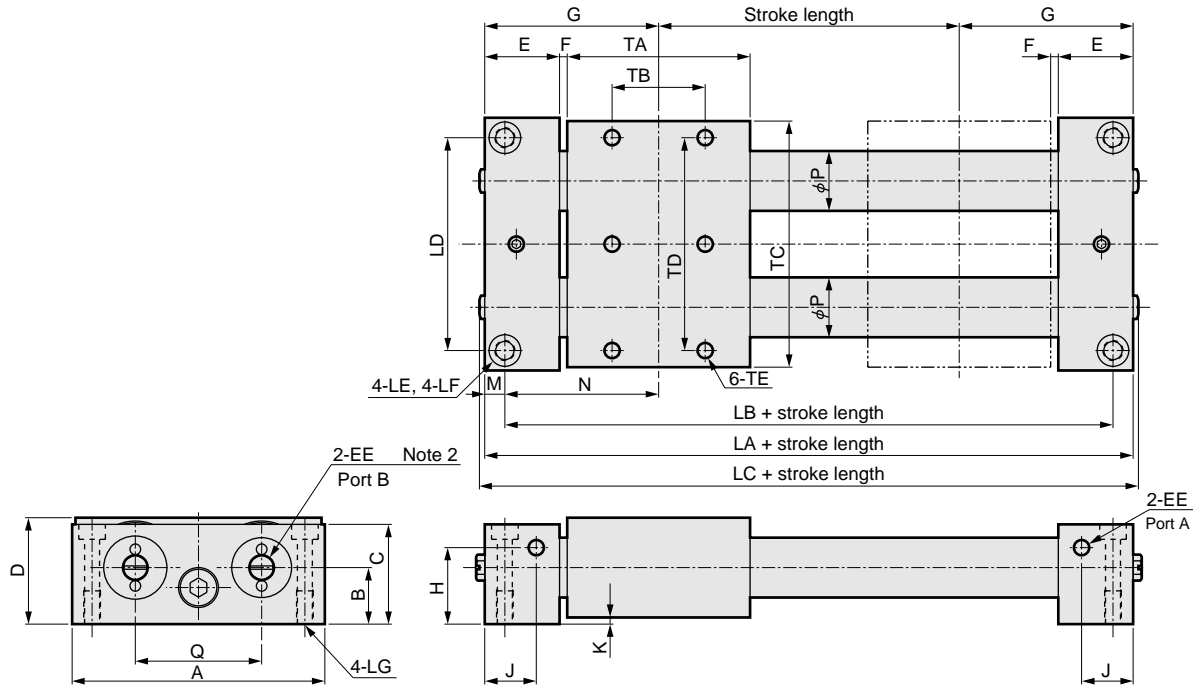
- SCP*2
- CMK2
- CMA2
- SCM
- SCG
- SCA2
- SCS
- CKV2
- CA/OV2
- SSD
- CAT
- MDC2
- MVC
- SMD2
- MSD*
- FC*
- STK
- ULK*
- JSK/M2
- JSG
- JSC3
- USSD
- USC
- JSB3
- LMB
- STG
- STS/L
- LCS
- LCG
- LCM
- LCT
- LCY
- STR2
- UCA2
- HCM
- HCA
- SRL2**
- SRG
- SRM
- SRT
- MRL2**
- MRG2
- SM-25
- CAC3
- UCAC
- RCC2
- MFC
- SHC
- GLC
- Ending

Magnet type rodless cylinder
Rodless type



Dimensions: MRL2-G (simplified guide type, 1 piston) / MRL2-W (simplified guide type, 2 piston)

- MRL2-G (simplified guide type 1 piston) without switch
- MRL2-W (simplified guide type 2 piston) without switch



Note: Air piping port A, B can be selected.
 A plug is assembled to Port B at shipment.
 · φ 6 to φ 20 : Plug (FPL-M5)
 · φ 25, φ 32 : Hexagon socket head tapered screw plug

Note 2: MRL2-W is "4-EE".

Symbol	Dimensions					Installation dimensions								
	Bore size (mm)	LA	LC	A	C	D	LB	LD	LE	LF	LG	TB	TD	TE
SRL2	φ 6	74	80.2	46	20	24	68	40	φ 3.5	-	M4 depth 6	20	38	M3 depth 4.5
SRG	φ 10	83	86.2	64	24	26	74	54	φ 4.5	φ 8 spot face depth 4.4	M5 depth 10	20	55	M4 depth 6
SRM	φ 16	105	108.2	76	30	32	93	64	φ 5.5	φ 9.5 spot face depth 5.4	M6 depth 12	28	64	M5 depth 8
SRT	φ 20	131	134.2	90	36	38	119	77	φ 6.9	φ 11 spot face depth 6.5	M8 depth 12	44	78	M5 depth 8
MRL2	φ 25	136	136	108	45	48	122	90	φ 6.9	φ 11 spot face depth 6.5	M8 depth 12	40	90	M6 depth 9
MRG2	φ 32	144	144	126	53	56	130	108	φ 6.9	φ 11 spot face depth 6.5	M8 depth 12	40	104	M6 depth 9

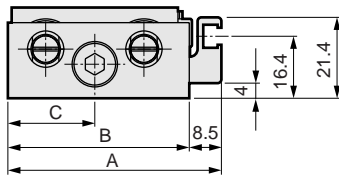
Symbol	General dimensions														
	Bore size (mm)	B	E	EE	F	G	H	J	K	M	N	P	Q	TA	TC
RCC2	φ 6	13	15	M5 depth 4	2	37	9	9.5	2	3	34	7.6	26	40	44
MFC	φ 10	14	19.5	M5 depth 4	2	41.5	5.5	11.5	2	4.5	37	12	34	40	62
SHC	φ 16	17	22.5	M5 depth 4	2.5	52.5	23	15.5	2	6	46.5	18	38	55	74
GLC	φ 20	20	25.5	M5 depth 4	3	65.5	28	17	2	6	59.5	23	46	74	88
	φ 25	25.5	30	Rc1/8	3	68	29	20	3	7	61	28	50	70	101
	φ 32	29.5	30	Rc1/8	3	72	37	20	3	7	65	35	60	78	119

Dimensions: MRL2-G (simplified guide type, 1 piston) / MRL2-W (simplified guide type, 2 piston)

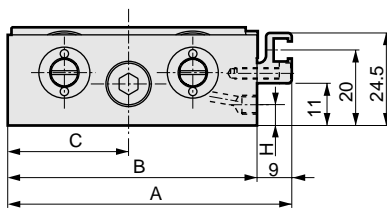
- MRL2-GL (simplified guide type 1 piston) with switch
- MRL2-WL (simplified guide type 2 piston) with switch



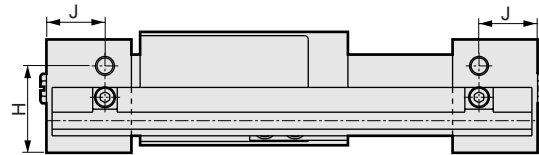
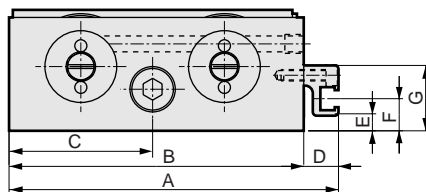
- For $\phi 6$



- For $\phi 10$



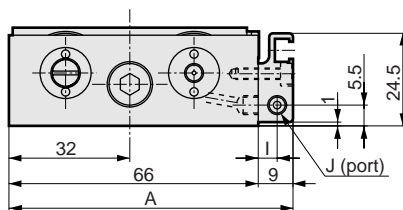
- For $\phi 16$ to $\phi 32$



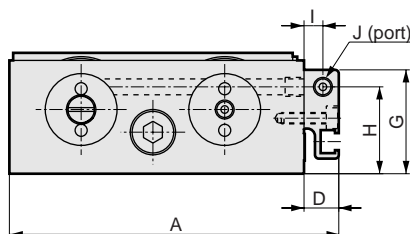
Symbol	A	B	C	D	E	F	G	H	J
Bore size (mm)									
$\phi 6$	56.5	48	23	-	-	-	-	9	9.5
$\phi 10$	75	66	32	-	-	-	-	5.5	11.5
$\phi 16$	87	78	38	9	4	8.5	17.3	23	15.5
$\phi 20$	101	92	45	9	9	13.5	22.3	28	17
$\phi 25$	116.7	108	54	8.7	2	7.5	21	29	20
$\phi 32$	134.7	126	63	8.7	10	15.5	29	37	20

- MRL2-GL-*R (simplified guide type 1 piston) common porting type with switch
- MRL2-WL-*R (simplified guide type 2 piston) common porting type with switch

- For $\phi 10$



- For $\phi 16$ to $\phi 32$



Symbol	A	D	G	H	I	J
Bore size (mm)						
$\phi 10$	75	-	-	-	5	M5 depth 4
$\phi 16$	87	9	27.5	23	5	M5 depth 4
$\phi 20$	101	9	32.5	28	5	M5 depth 4
$\phi 25$	122	14	45	29	7.5	Rc1/8
$\phi 32$	140	14	53	37	7.5	Rc1/8

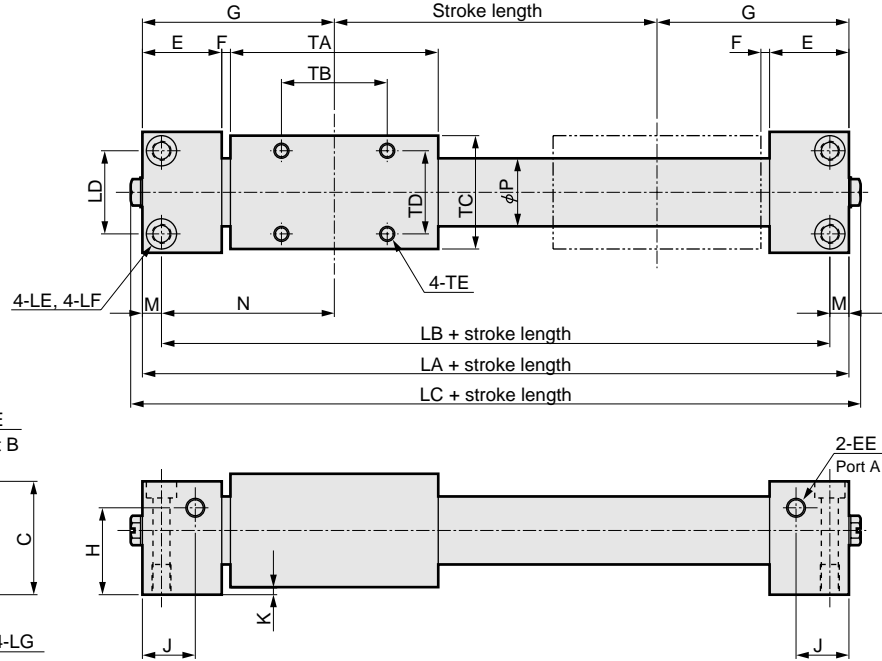
SCP*2
CMK2
CMA2
SCM
SCG
SCA2
SCS
CKV2
CA/OV2
SSD
CAT
MDC2
MVC
SMD2
MSD*
FC*
STK
ULK*
JSK/M2
JSG
JSC3
USSD
USC
JSB3
LMB
STG
STS/L
LCS
LCG
LCM
LCT
LCY
STR2
UCA2
HCM
HCA
SRL2
SRG
SRM
SRT
MRL2
MRG2
SM-25
CAC3
UCAC
RCC2
MFC
SHC
GLC
Ending

Magnet type rodless cylinder
Rodless type

Dimensions: MRL2 (basic type)



● MRL2 (basic type) without switch



Note: Air piping port A, B can be selected.
 A plug is assembled to Port B at shipment.
 · $\phi 6$ to $\phi 20$: Plug (FPL-M5)
 · $\phi 25, \phi 32$: Hexagon socket head tapered screw plug

Symbol	Dimensions					Installation dimensions								
	LA	LC	A	C	D	LB	LD	LE	LF	LG	TB	TD	TE	
$\phi 6$	74	80.2	20	16.5	20	68	14	$\phi 3.5$	-	M4 depth 6	20	12	M3 depth 4.5	
$\phi 10$	80	86.2	26	24	26	72	18	$\phi 3.5$	$\phi 6.5$ spot face depth 3.3	M4 depth 8	20	18	M3 depth 4.5	
$\phi 16$	102	108.2	32	30	32	92	22	$\phi 4.5$	$\phi 8$ spot face depth 4.4	M5 depth 8	28	22	M4 depth 6	
$\phi 20$	128	134.2	38	36	38	116	26	$\phi 5.5$	$\phi 9.5$ spot face depth 5.4	M6 depth 12	44	26	M4 depth 6	
$\phi 25$	130	132.2	52	45	48	118	40	$\phi 5.5$	$\phi 9.5$ spot face depth 5.4	M6 depth 12	40	30	M6 depth 6	
$\phi 32$	138	140.2	60	53	56	124	46	$\phi 6.9$	$\phi 11$ spot face depth 6.5	M8 depth 12	40	40	M6 depth 9	

Symbol	General dimensions												
	B	E	EE	F	G	H	J	K	M	N	P	TA	TC
$\phi 6$	11	15	M5 depth 4	2	37	9	9.5	2	3	34	7.6	40	18
$\phi 10$	14	18	M5 depth 4	2	40	5.5	10	2	4	36	12	40	24
$\phi 16$	17	21	M5 depth 4	2.5	51	23	14	2	5	46	18	55	30
$\phi 20$	20	24	M5 depth 4	3	64	28	15.5	2	6	58	23	74	36
$\phi 25$	25.5	27	Rc1/8	3	65	29	17	3	6	59	28	70	45
$\phi 32$	29.5	27	Rc1/8	3	69	37	17	3	7	62	35	78	53

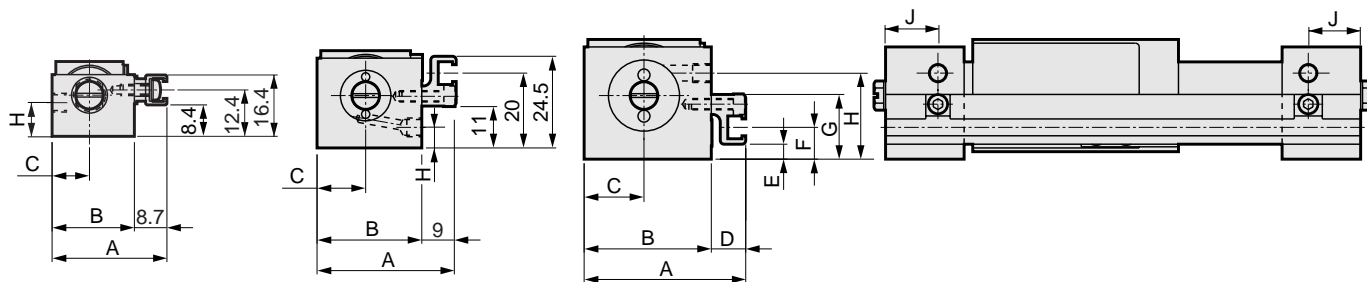
Dimensions: MRL2 (basic type)

● MRL2-L (basic type) with switch

● For $\phi 6$

● For $\phi 10$

● For $\phi 16$ to $\phi 32$



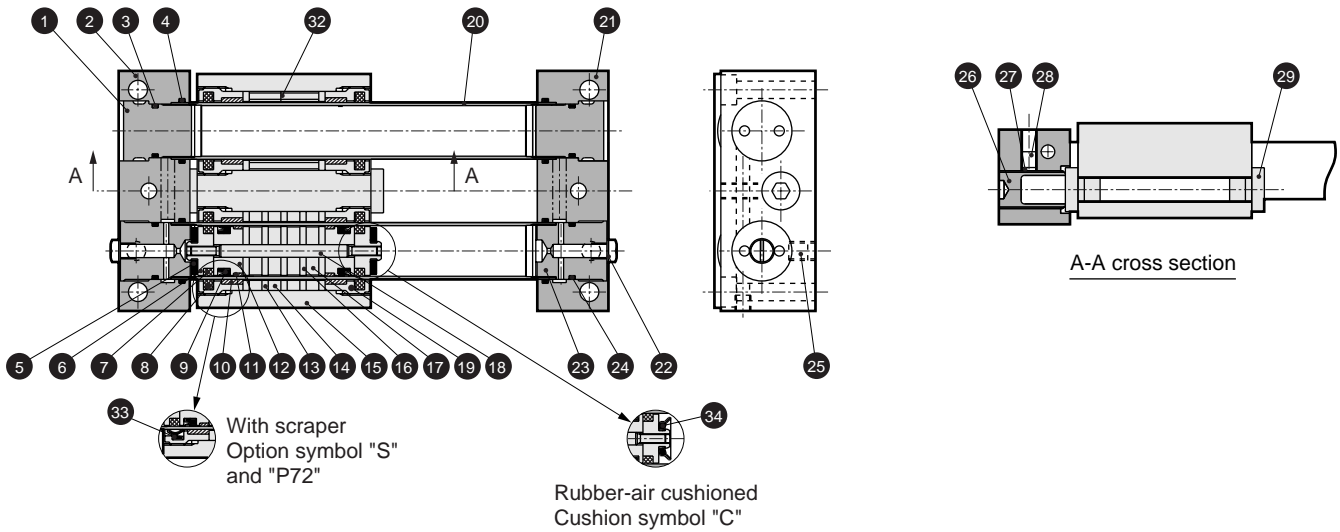
Symbol	A	B	C	D	E	F	G	H	J
Bore size (mm)									
$\phi 6$	30.7	22	10	-	-	-	-	9	9.5
$\phi 10$	37	28	13	-	-	-	-	5.5	10
$\phi 16$	43	34	16	9.0	4	8.5	17.3	23	14
$\phi 20$	49	40	19	9.0	9	13.5	22.3	28	15.5
$\phi 25$	60.7	52	26	8.7	2	7.5	21	29	17
$\phi 32$	68.7	60	30	8.7	10	15.5	29	37	17

- SCP*2
- CMK2
- CMA2
- SCM
- SCG
- SCA2
- SCS
- CKV2
- CA/OV2
- SSD
- CAT
- MDC2
- MVC
- SMD2
- MSD*
- FC*
- STK
- ULK*
- JSK/M2
- JSG
- JSC3
- USSD
- USC
- JSB3
- LMB
- STG
- STS/L
- LCS
- LCG
- LCM
- LCT
- LCY
- STR2
- UCA2
- HCM
- HCA
- SRL2**
- SRG
- SRM
- SRT
- MRL2**
- MRG2
- SM-25
- CAC3
- UCAC
- RCC2
- MFC
- SHC
- GLC
- Ending

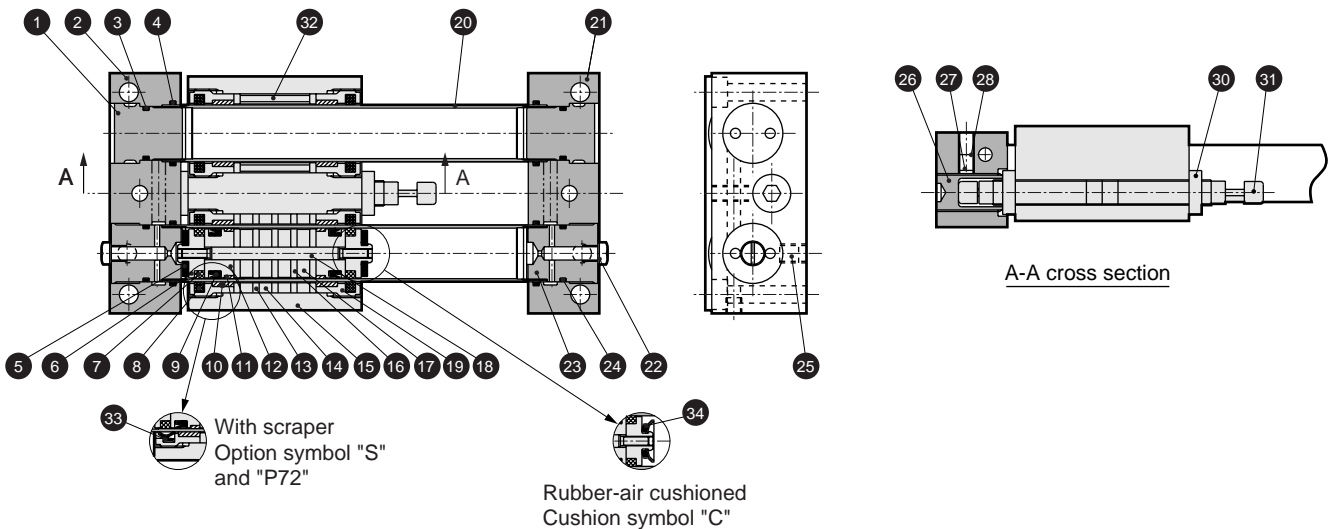
Magnet type rodless cylinder
Rodless type

Internal structure and parts list MRL2-G (simplified guide type 1 piston)

● MRL2-G (simplified guide type 1 piston)



● MRL2-G*-C (with shock absorber)



Parts list

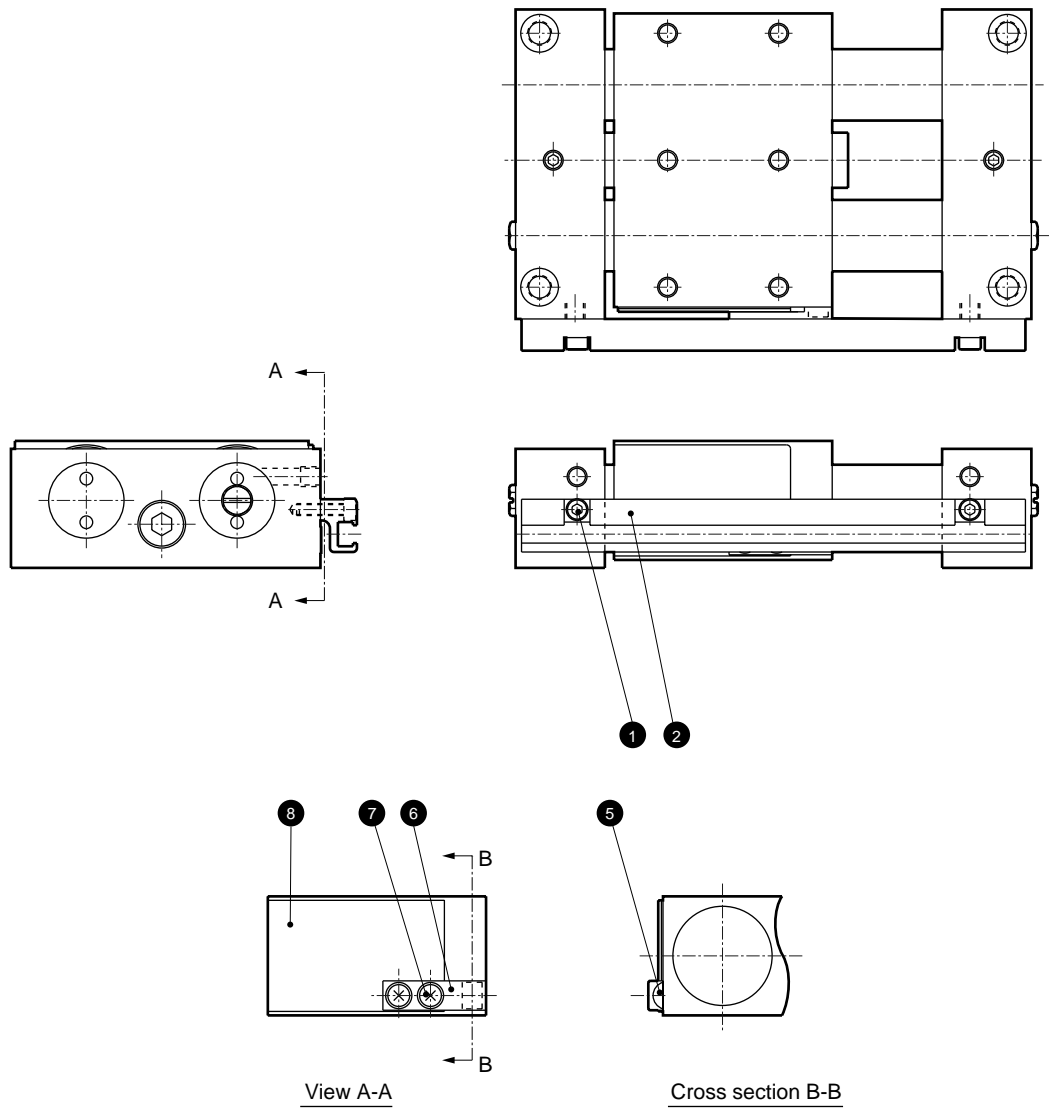
No.	Parts name	Material	Remarks	No.	Parts name	Material	Remarks
1	End cap	Aluminum alloy	Chromate	18	Piston shaft	Stainless steel	
2	End plate (L)	Aluminum alloy	Alumite	19	Slider guard	Aluminum alloy	Chromate
3	O ring	Nitrile rubber		20	Cylinder tube	Stainless steel	
4	O ring	Nitrile rubber		21	End plate (R)	Aluminum alloy	Alumite
5	Cushion rubber	Urethane rubber		22	Plug	Copper alloy or steel	
6	Piston (2)	Aluminum alloy	Chromate	23	End cap	Aluminum alloy	Chromate
7	Lube keeping structure (piston)	Special rubber		24	O ring	Nitrile rubber	
8	Lube keeping structure (slider)	Special rubber	None for P72	25	Hexagon socket head set screw	Alloy steel	
9	Piston packing seal	Nitrile rubber		26	Stopper	Alloy steel	Nickeling
10	Slider wear ring	Polyacetal resin		27	Set shoe	Aluminum alloy	
11	Piston wear ring	Polyacetal resin		28	Hexagon socket head set screw	Stainless steel	
12	Piston (1)	Aluminum alloy	Chromate	29	Stopper bolt	Steel	Nickeling
13	Slider yoke	Steel	Galvanizing	30	Hexagon nut	Steel	
14	Magnet	Special alloy		31	Shock absorber		
15	Slider	Aluminum alloy	Alumite	32	Spacer	Stainless steel	
16	Piston yoke	Steel	Galvanizing	33	Scraper	Urethane rubber	
17	Magnet	Special alloy		34	Cushion rubber	Special rubber	

Note: A magnetic force of magnet is powerful. Do not disassemble the product.

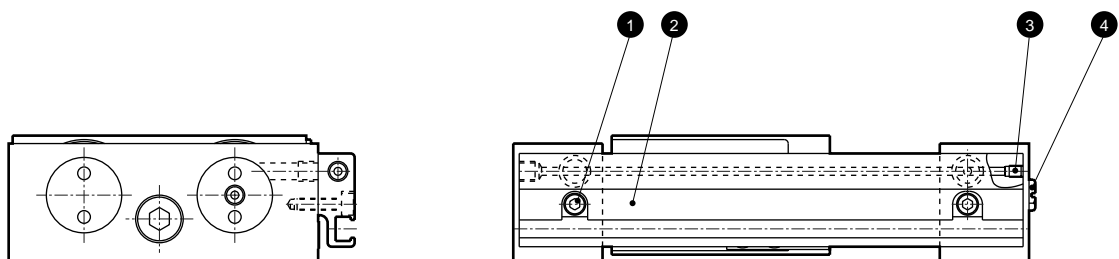
SCP*2
CMK2
CMA2
SCM
SCG
SCA2
SCS
CKV2
CA/OV2
SSD
CAT
MDC2
MVC
SMD2
MSD*
FC*
STK
ULK*
JSK/M2
JSG
JSC3
USSD
USC
JSB3
LMB
STG
STS/L
LCS
LCG
LCM
LCT
LCY
STR2
UCA2
HCM
HCA
SRL2
SRG
SRM
SRT
MRL2
MRG2
SM-25
CAC3
UCAC
RCC2
MFC
SHC
GLC
Ending

Internal structure and parts list MRL2-G (simplified guide type 1 piston)

● MRL2-GL (with switch)



● MRL2-GL-*R (common porting type with switch)



Parts list

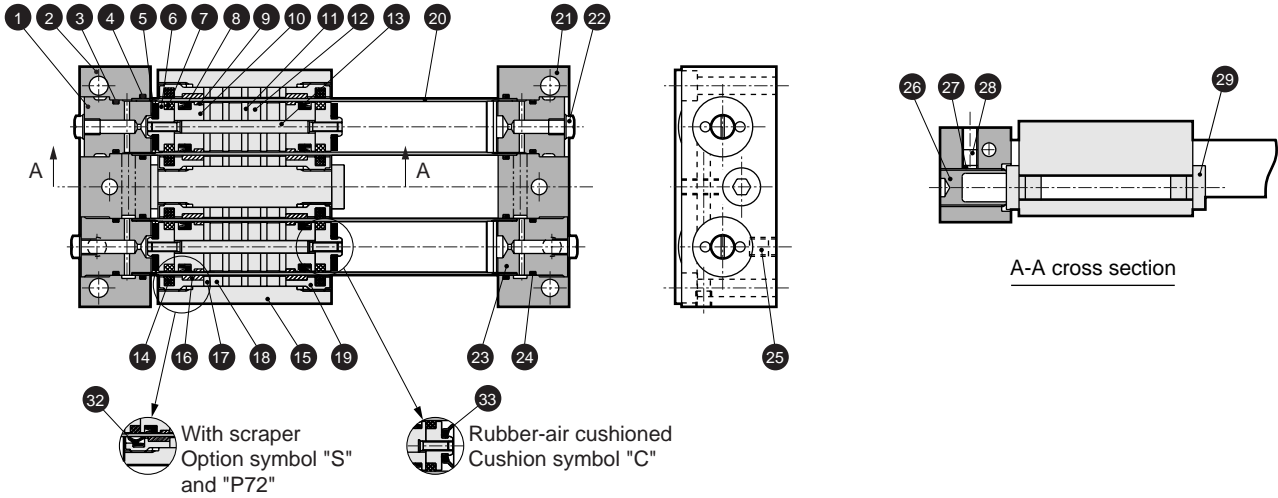
No.	Parts name	Material	Remarks	No.	Parts name	Material	Remarks
1	Hexagon socket head cap bolt	Stainless steel		5	Magnet	Special alloy	
2	Switch rail	Aluminum alloy	Alumite	6	Magnet holder	Polyacetal resin	
3	Hexagon socket head set screw	Stainless steel		7	Cross headed pan	Stainless steel	
4	Plug	Copper alloy or steel		8	Shield plate	Steel	Nickeling

SCP*2
CMK2
CMA2
SCM
SCG
SCA2
SCS
CKV2
CA/OV2
SSD
CAT
MDC2
MVC
SMD2
MSD*
FC*
STK
ULK*
JSK/M2
JSG
JSC3
USSD
USC
JSB3
LMB
STG
STS/L
LCS
LCG
LCM
LCT
LCY
STR2
UCA2
HCM
HCA
SRL2
SRG
SRM
SRT
MRL2
MRG2
SM-25
CAC3
UCAC
RCC2
MFC
SHC
GLC
Ending

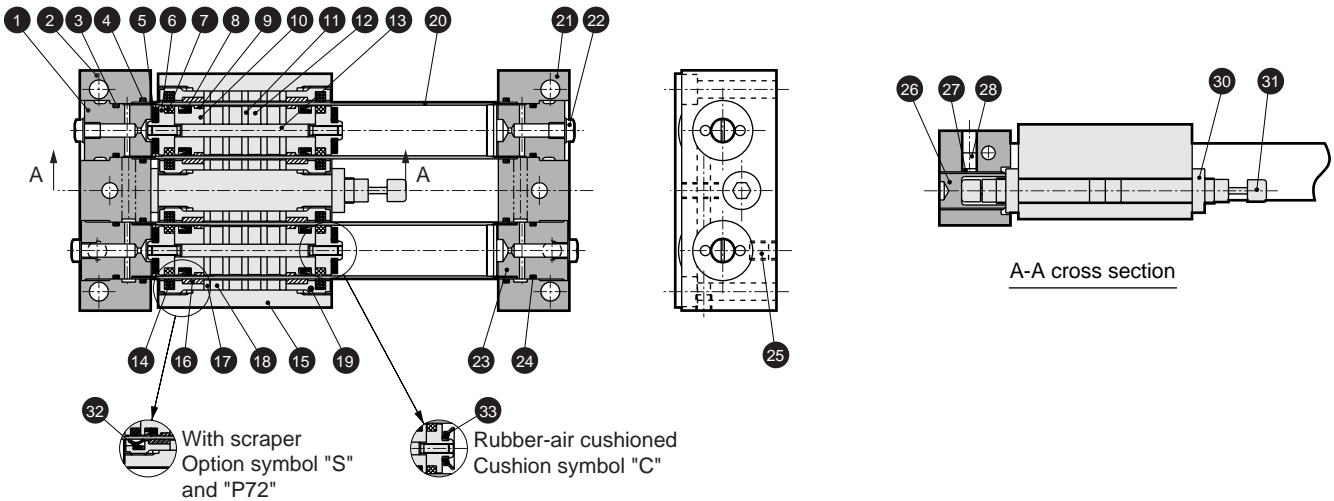
Magnet type rodless cylinder
Rodless type

Internal structure and parts list MRL2-W (simplified guide type 2 piston)

● MRL2-W (simplified guide type 2 piston)



● MRL2-W*-C (with shock absorber)



Parts list

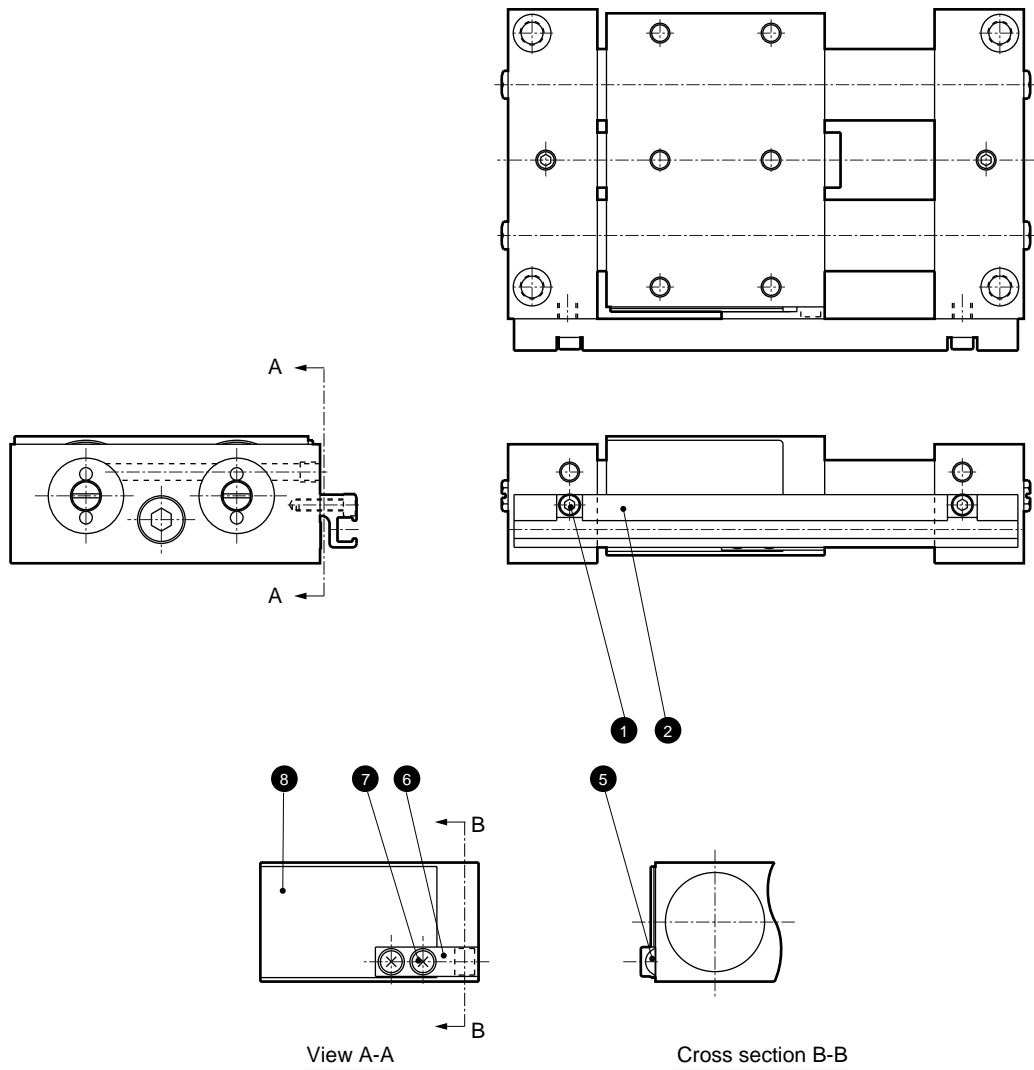
No.	Parts name	Material	Remarks	No.	Parts name	Material	Remarks
1	End cap	Aluminum alloy	Chromate	17	Slider yoke	Steel	Galvanizing
2	End plate (L)	Aluminum alloy	Alumite	18	Magnet	Special alloy	
3	O ring	Nitrile rubber		19	Slider guard	Aluminum alloy	Chromate
4	O ring	Nitrile rubber		20	Cylinder tube	Stainless steel	
5	Cushion rubber	Urethane rubber		21	End plate (R)	Aluminum alloy	Alumite
6	Piston (2)	Aluminum alloy	Chromate	22	Plug	Copper alloy or steel	
7	Lube keeping structure (piston)	Special rubber		23	End cap	Aluminum alloy	Chromate
8	Piston packing seal	Nitrile rubber		24	O ring	Nitrile rubber	
9	Piston wear ring	Polyacetal resin		25	Hexagon socket head set screw	Alloy steel	
10	Piston (1)	Aluminum alloy	Chromate	26	Stopper	Alloy steel	Nickeling
11	Piston yoke	Steel	Galvanizing	27	Set shoe	Aluminum alloy	
12	Magnet	Special alloy		28	Hexagon socket head set screw	Stainless steel	
13	Piston shaft	Stainless steel		29	Stopper bolt	Steel	Nickeling
14	Lube keeping structure (slider)	Special rubber		30	Hexagon nut	Steel	
15	Slider	Aluminum alloy	Alumite	31	Shock absorber		
16	Slider wear ring	Polyacetal resin		32	Scraper	Urethane rubber	
				33	Cushion rubber	Special rubber	

Note: A magnetic force of magnet is powerful. Do not disassemble the product.

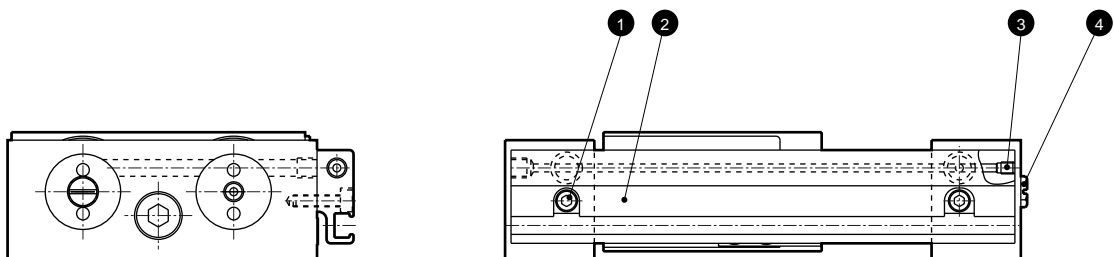
SCP*2
CMK2
CMA2
SCM
SCG
SCA2
SCS
CKV2
CA/OV2
SSD
CAT
MDC2
MVC
SMD2
MSD*
FC*
STK
ULK*
JSK/M2
JSG
JSC3
USSD
USC
JSB3
LMB
STG
STS/L
LCS
LCG
LCM
LCT
LCY
STR2
UCA2
HCM
HCA
SRL2
SRG
SRM
SRT
MRL2
MRG2
SM-25
CAC3
UCAC
RCC2
MFC
SHC
GLC
Ending

Internal structure and parts list MRL2-W (simplified guide type 2 piston)

● MRL2-WL (with switch)



● MRL2-WL-*R (common porting type with switch)



Parts list

No.	Parts name	Material	Remarks	No.	Parts name	Material	Remarks
1	Hexagon socket head cap bolt	Stainless steel		5	Magnet	Special alloy	
2	Switch rail	Aluminum alloy	Alumite	6	Magnet holder	Polyacetal resin	
3	Hexagon socket head set screw	Stainless steel		7	Cross headed pan	Stainless steel	
4	Plug	Copper alloy or steel		8	Shield plate	Steel	Nickeling

SCP*2
CMK2
CMA2
SCM
SCG
SCA2
SCS
CKV2
CA/OV2
SSD
CAT
MDC2
MVC
SMD2
MSD*
FC*
STK
ULK*
JSK/M2
JSG
JSC3
USSD
USC
JSB3
LMB
STG
STS/L
LCS
LCG
LCM
LCT
LCY
STR2
UCA2
HCM
HCA
SRL2
SRG
SRM
SRT
MRL2
MRG2
SM-25
CAC3
UCAC
RCC2
MFC
SHC
GLC
Ending

Magnet type rodless cylinder
Rodless type