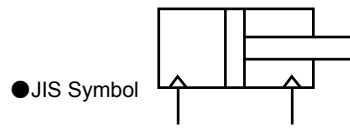


Rotary Clamp Cylinder (Single Guide Type) RCS Series (φ16)



Features

- Shortening of the total dimension and reduction of installation space
- Installation using through bolt is available.
- Wrench flat or rectangle flat is selectable for the end shape of rod.



Specification

Description		RCS
Bore size	mm	φ16
Actuation		Double acting
Working fluid		Compressed air
Max. working pressure	MPa	1.0
Min. working pressure	MPa	0.2
Withstanding pressure	MPa	1.6
Ambient temperature	°C	-10 to 60 (no freezing)
Port size		M5
Working piston speed	mm/s	50 to 200
Cushion		Rod side : Rubber cushioned Head side : Nil
Lubrication		Not required (when lubricating, use turbine oil Class 1 ISOVG 32)
Turning angle		90°±10°
Rotational direction		Right · Left
Rod revolable angle tolerance (Clamp) : Default		±1.2°
Pressurized area	Retracted side	151
	Extend side	201
Service life		100 ten thousand time

Stroke

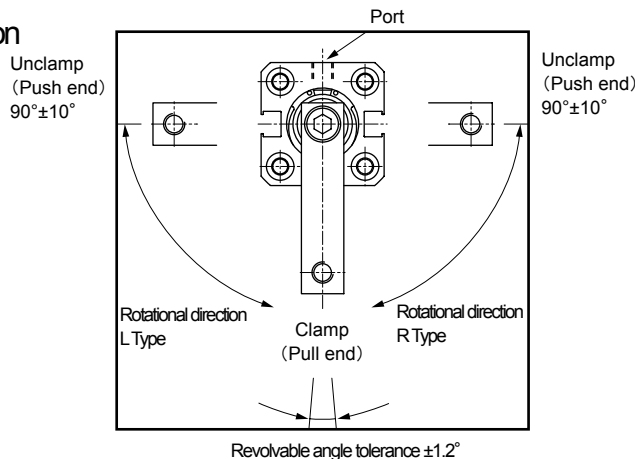
Stroke (mm)	Rotational stroke (mm)	Clamping stroke (mm)
17.5	7.5	10
27.5		20

Cylinder weight

(Unit : g)

Stroke (mm)	Weight	Additional weight frange
17.5	134	64
27.5	167	

Rotational direction



Refer to "Safety precautions" on the back of this catalog before use.

How to order

Without switch

RCS - 00 - 16 - 27.5 - R ————— N4

With switch

RCS - 00 - 16 - 27.5 - R - T0H - R - N4

A Mounting style

B Bore size

C Stroke

D Rotational direction

E Switch model no.

F Switch quantity

G Option

A Mounting style	
00	Basic type
FA	Rod end flange type
FB	Head end flange type

B Bore size (mm)	
16	φ 16

C Stroke (mm)			
Stroke	Bore size	Rotational section	Clamp
17.5	φ 16	7.5	10
27.5			20

D Rotational direction	
R	Clamp(Pull)looking from rod end:Rotated 90°in CW direction
L	Clamp(Pull)looking from rod end:Rotated 90°in CCW direction

E Switch model no.				
Axial lead wire	Radial lead wire	Contact	Indicator	Lead wire
T0H※	T0V※	Reed	1 color indicator type	2-wire
T5H※	T5V※		W/o indicator light	
T2H※	T2V※	Proximity	1 color indicator type	2-wire
T3H※	T3V※			3-wire
T2WH※	T2WV※		2 color indicator type	2-wire
T3WH※	T3WV※			3-wire
※Lead wire length (m)				
Blank	1m(Standard)			
3	3m (Option)			
5	5m (Option)			

F Switch quantity	
R	One on rod end
H	One on head end
D	Two

G Option	
Blank	End of rod:wrench flat
N4	End of rod:rectangle flat

〈Example of model number〉

RCS-00-16-27.5-R-T0H-R

Model : Rotary clamp cylinder Double acting

- A** Mounting style : Basic type
- B** Bore size : φ16mm
- C** Stroke : 27.5mm
- D** Rotational direction : Clamp(Pull)looking from rod end:Rotated 90°in CW direction
- E** Switch model no. : Reed T0H switch,Lead wire length 1m
- F** Switch quantity : One on rod end
- G** Option : End of rod:wrench flat

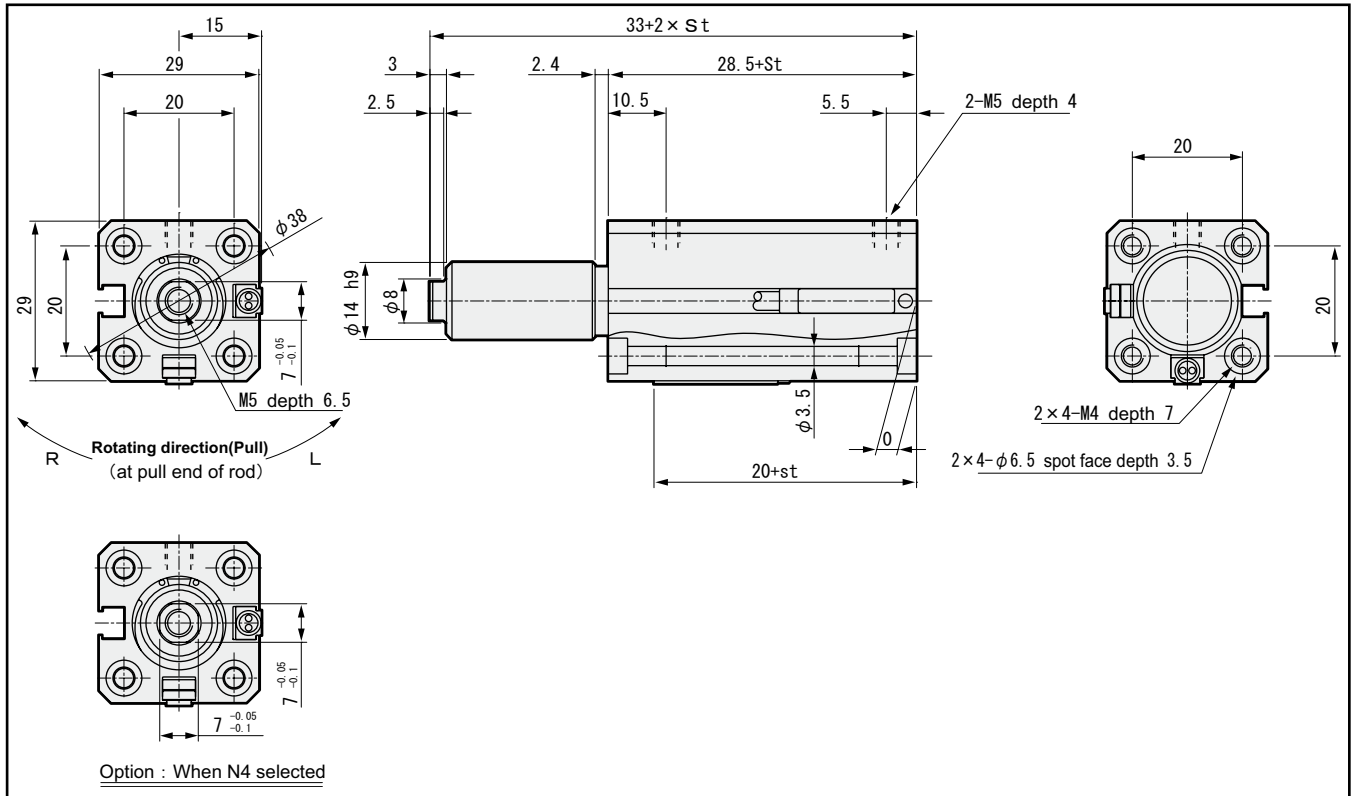
How to order switch

SW - T0H

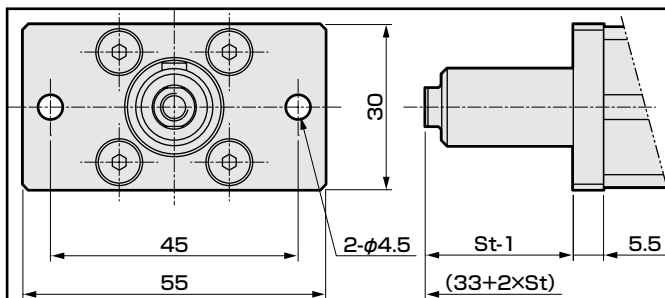
Switch model no.
(Item **E** above)

Dimensions

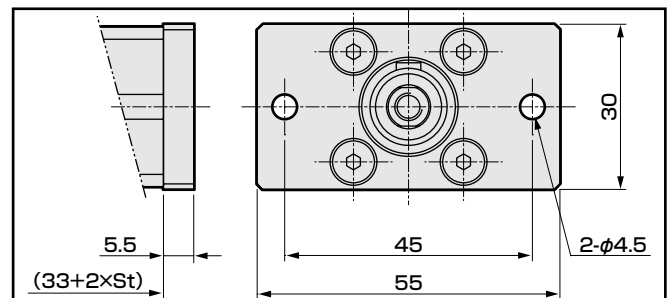
● Basic type (00)



● Rod end flange type (FA)



● Head end flange type (FB)



Safety precautions

Refer to "Pneumatic cylinder I "catalog No.CB-029SA for starting use.

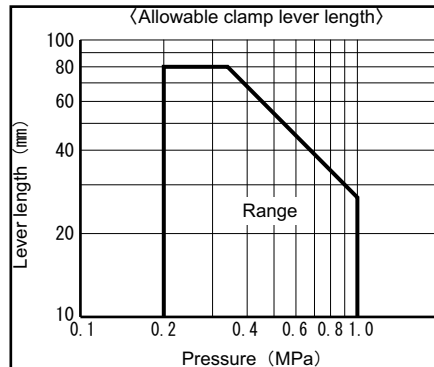
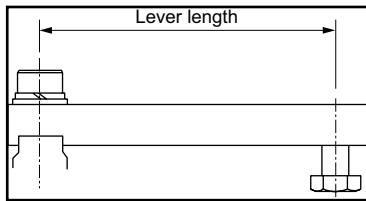
⚠ Caution

■ Design & Selection

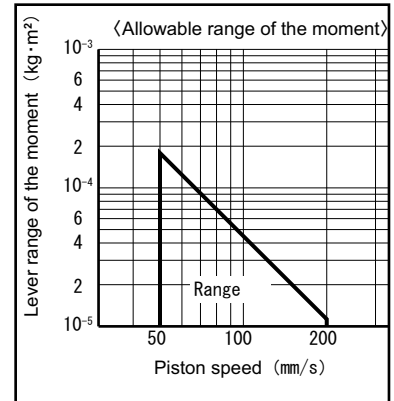
- The piston rod of this cylinder rotates 90° and push or pull.
 - During rotation of the lever attached with piston rod end, do not interfere with the outside.
 - Install a protective cover if bodily injury could occur.
- Clamp position
 - Do not clamp a work piece during the rotation stroke. Adjust the clamping position to be approx. 3 mm or more before the stroke end position.
 - Do not clamp with the rotating force of piston rod.
 - (a) Do not clamp in the rotating direction.
 - (b) Do not clamp sloping parts.
 - (c) Do not use horizontally.
 - (d) Do not use when the workpiece moves during clamping.

⚠ Caution

- Clamp lever length & working pressure
Set lever length & working pressure within the ranges shown in following figures.

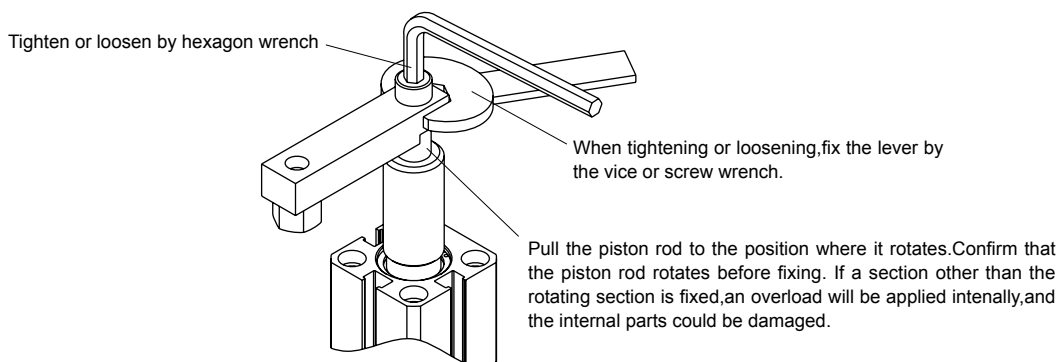


- Lever range of the moment & piston speed
Set lever range of the moment & piston speed within the ranges shown in right figure.
- Working environment
The coil scraper for welding environment is not build in.

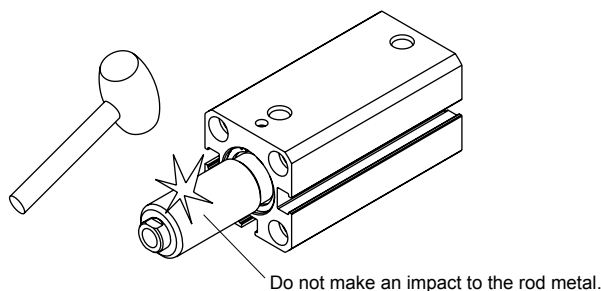


■ Installation & Adjustment

- Mouting or removing the lever
When mouting or removing the lever, work as the following figure.



- Impact to the cylinder
Do not make an impact to the rod metal. It may break.



本製品及び関連技術を輸出される場合は、兵器・武器関連用途に使用されるおそれのないよう、ご留意ください。
If the goods and their replicas, or the technology and software in this catalog are to be exported, laws require the exporter to make sure they will never be used for the development or the manufacture of weapons for mass destruction.

CKD Corporation

<Website>
<http://www.ckd.co.jp/>

本社・工場 〒485-8551 愛知県小牧市応時2-250
 営業本部 〒485-8551 愛知県小牧市応時2-250
 Overseas Sales Administration dept. 2-250 Uji Komaki, Aichi 485-8551, Japan
 Overseas Business div.
 東京支店 〒105-0013 東京都港区浜松町1-31-1 (文化放送メディアプラス4階)
 名古屋支店 〒485-8551 愛知県小牧市応時2-250
 大阪支店 〒550-0001 大阪府西区土佐堀1-3-20

TEL(0568)77-1111 FAX(0568)77-1123
 TEL(0568)74-1303 FAX(0568)77-3410
 TEL(0568)74-1338 FAX(0568)77-3461
 TEL(03)5402-3620 FAX(03)5402-0120
 TEL(0568)74-1356 FAX(0568)77-3317
 TEL(06)6459-5770 FAX(06)6446-1945

- このカタログに掲載の仕様および外観を、改善のため予告なく変更することがあります。
 - Specifications are subject to change without notice.
- © CKD Corporation 2011 All copy rights reserved.

お客様技術相談窓口

フリーダイヤル ☎0120-771060
 受付時間 9:00~12:00/13:00~17:00
 (土日、休日除く)