

FK

Simplified floating joint

Related products

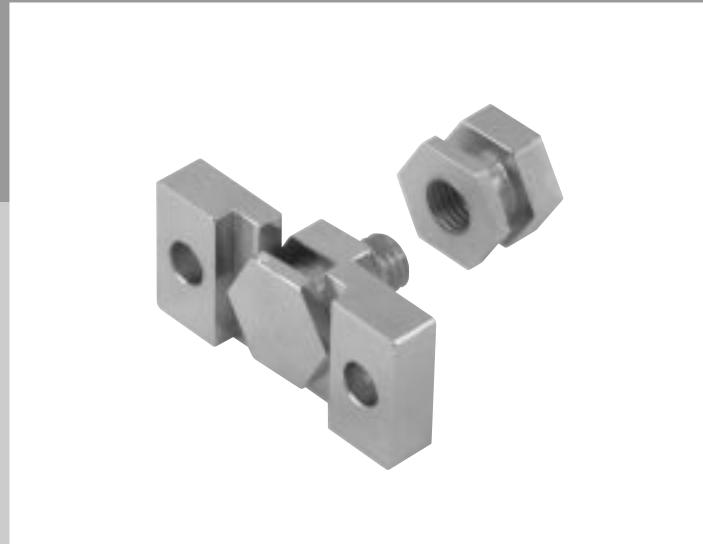
Overview

This simplified floating joint eliminates misalignment and parallelism defective when cylinder installed, and realizes smooth rod operation.

Features

Easy center/parallelism alignment

This can be set quickly



CONTENTS

Series variation	557
⚠ Safety precautions	558
● Simplified floating joint (FK)	560

● : Standard, ■ : Not available

Variation	Model no.	Thread size															Page		
		M3x 0.5	M4x 0.7	M5x 0.8	M6x 1.0	M8x 1.0	M8x 1.25	M10x 1.25	M10x 1.5	M12x 1.5	M14x 1.5	M16x 1.5	M16x 2.0	M18x 1.5	M20x 2.5	M22x 1.5		M26x 1.5	
Male thread type	FK-*-N	●	●	●	●	■	●	■	●	■	■	■	●	■	●	■	■	■	560
Female thread type	FK	●	●	●	●	●	●	■	●	●	●	■	●	■	●	●	■		

RRC
GRC
RV3*
NHS
HR
LN
FH100
HAP
BSA2
BHA/ BHG
LHA
LHAG
HKP
HLA/ HLB
HLAG/ HLBG
HEP
HCP
HMF
HMFb
HFP
HLC
HGP
FH500
HBL
HDL
HMD
HJL
BHE
CKG
CK
CKA
CKS
CKF
CKJ
CKL2
CKL2 -*-HC
CKH2
CKLB2
NCK/ SCK/FCK
FJ
FK
Ending

Simplified floating joint
Related products



Pneumatic components

Safety precautions

Always read this section before starting use.

Refer to Intro 69 for general details on the cylinders, and to Ending 78 for cylinder switches.

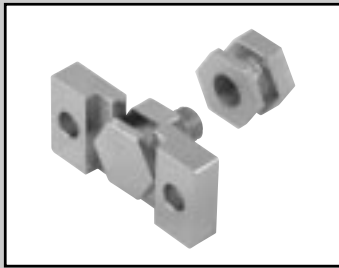
Simplified floating joint FK Series

Installation & Adjustment

WARNING

- When connecting the object to be driven and the cylinder rod with the simplified floating joint, tighten securely at a torque that matches thread size. If connection may come loose during use, fix with a pin or apply adhesive to prevent loosening.
- The screw section can be turned but is not a rotary joint. Do not use this for rotary purposes.

RRC
GRC
RV3*
NHS
HR
LN
FH100
HAP
BSA2
BHA/
BHG
LHA
LHAG
HKP
HLA/
HLB
HLAG/
HLBG
HEP
HCP
HMF
HMFb
HFP
HLC
HGP
FH500
HBL
HDL
HMD
HJL
BHE
CKG
CK
CKA
CKS
CKF
CKJ
CKL2
CKL2
-*HC
CKH2
CKLB2
NCK/
SCK/FCK
FJ
FK
Ending



Simplified floating joint

FK Series

● Applicable cylinder bore size: ϕ 6 to ϕ 100



RRC
GRC
RV3*
NHS
HR
LN
FH100
HAP
BSA2
BHA/
BHG
LHA
LHAG
HKP
HLA/
HLB
HLAG/
HLBG
HEP
HCP
HMF
HMFb
HFP
HLC
HGP
FH500
HBL
HDL
HMD
HJL
BHE
CKG
CK
CKA
CKS
CKF
CKJ
CKL2
CKL2
*-HC
CKH2
CKLB2
NCK/
SCK/FCK
FJ
FK
Ending

Specifications

	Model no.		Allowable load (N)	Allowable eccentricity (mm)	Backlash amount in thrust direction (mm)
	Male thread	Female thread			
	FK-M3-N	FK-M3	63	±0.3	0.1 to 0.3
	FK-M4-N	FK-M4	110		
	FK-M5-N	FK-M5	179		
	FK-M6-N	FK-M6	253		
	FK-M8-N	FK-M8 × 1.0	462		
	—	FK-M8 × 1.25	462		
	FK-M10-N	FK-M10	734		
	—	FK-M12	1069	±0.7	
	—	FK-M14	1466		
	FK-M16-N	FK-M16	2003		
	—	FK-M18	2448		
	FK-M20-N	—	3130		
	—	FK-M22	3896		
	—	FK-M26	6219		

Note 1: Allowable load indicates static load.

How to order

● Simplified floating joint

FK - **M3-N**

Model no.

Ⓐ Thread size

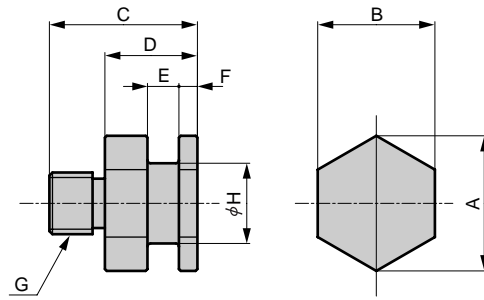
Symbol	Descriptions	
Ⓐ Thread size		
M3-N	M3 × 0.5	Male thread type
M4-N	M4 × 0.7	
M5-N	M5 × 0.8	
M6-N	M6 × 1.0	
M8-N	M8 × 1.25	
M10-N	M10 × 1.5	
M16-N	M16 × 2.0	
M20-N	M20 × 2.5	Female thread type
M3	M3 × 0.5	
M4	M4 × 0.7	
M5	M5 × 0.8	
M6	M6 × 1.0	
M8 × 1.0	M8 × 1.0	
M8 × 1.25	M8 × 1.25	
M10	M10 × 1.25	
M12	M12 × 1.5	
M14	M14 × 1.5	
M16	M16 × 1.5	
M18	M18 × 1.5	
M22	M22 × 1.5	
M26	M26 × 1.5	

Dimensions

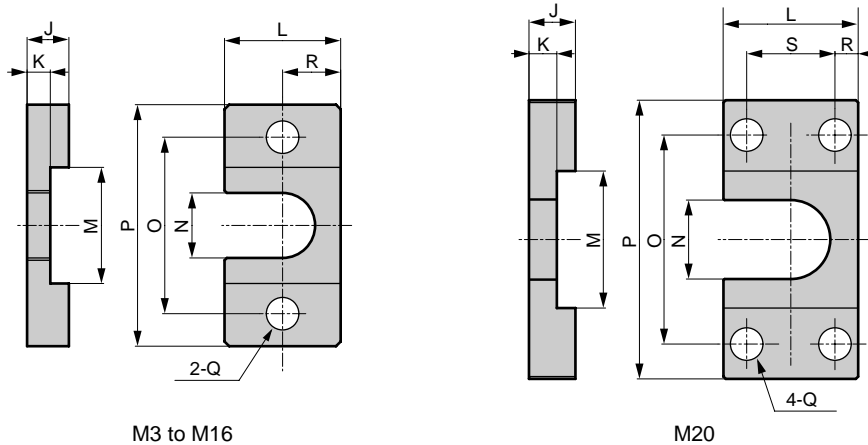


Material: Steel
Surface treatment: Nickeling

● Bracket (1)



● Bracket (2)



M3 to M16

M20

Bracket (1)

Model no.	Applicable cylinder	A	B	C	D	E	F	G	H
FK-M3-N	SSD-12	11.6	10	15	10	3.1 ^{+0.1} ₀	2	M3×0.5	6
FK-M4-N	SSD-16	11.6	10	15.5	10	3.1 ^{+0.1} ₀	2	M4×0.7	6
FK-M5-N	SSD-20, FCD-25	13.9	12	16.5	10	3.1 ^{+0.1} ₀	2	M5×0.8	8
FK-M6-N	SSD-25, FCD-32	13.9	12	19	10	3.1 ^{+0.1} ₀	2	M6×1.0	8
FK-M8-N	SSD-32, 40, FCD-40, 50	21.9	19	23	15	5.1 ^{+0.1} ₀	3	M8×1.25	13
FK-M10-N	SSD-50, 63, FCD-63	21.9	19	24	15	5.1 ^{+0.1} ₀	3	M10×1.5	13
FK-M16-N	SSD-80	37	32	31	20	7.1 ^{+0.1} ₀	4	M16×2.0	23
FK-M20-N	SSD-100	53.1	46	43	28	12.1 ^{+0.1} ₀	7	M20×2.5	32

Bracket (2)

Model no.	Applicable cylinder	J	K	L	M	N	O	P	Q	R	S
FK-M3-N	SSD-12	6	3 ⁰ _{-0.1}	16	14	7	24	34	4.5	8	—
FK-M4-N	SSD-16	6	3 ⁰ _{-0.1}	16	14	7	24	34	4.5	8	—
FK-M5-N	SSD-20, FCD-25	6	3 ⁰ _{-0.1}	19	16	9	26	36	4.5	9.5	—
FK-M6-N	SSD-25, FCD-32	6	3 ⁰ _{-0.1}	19	16	9	26	36	4.5	9.5	—
FK-M8-N	SSD-32, 40, FCD-40, 50	9	5 ⁰ _{-0.1}	25	25	14	38	52	7	12.5	—
FK-M10-N	SSD-50, 63, FCD-63	9	5 ⁰ _{-0.1}	25	25	14	38	52	7	12.5	—
FK-M16-N	SSD-80	12	7 ⁰ _{-0.1}	44	42	25	62	85	11	22	—
FK-M20-N	SSD-100	22	12 ⁰ _{-0.1}	65	59	34	90	120	14	13.5	38

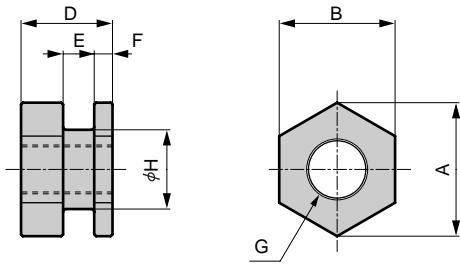
RRC
GRC
RV3*
NHS
HR
LN
FH100
HAP
BSA2
BHA/
BHG
LHA
LHAG
HKP
HLA/
HLB
HLAG/
HLBG
HEP
HCP
HMF
HMFB
HFP
HLC
HGP
FH500
HBL
HDL
HMD
HJL
BHE
CKG
CK
CKA
CKS
CKF
CKJ
CKL2
CKL2
*-HC
CKH2
CKLB2
NCK/
SCK/FCK
FJ
FK
Ending
Simplified floating joint
Related products

Dimensions

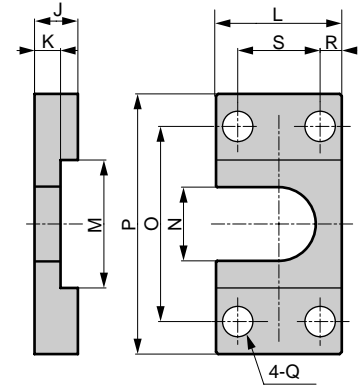
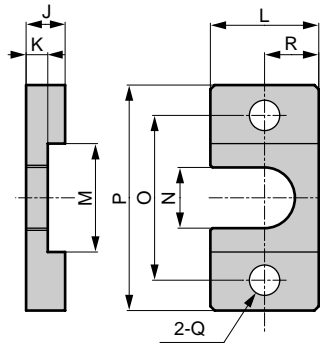


Material: Steel
Surface treatment: Nickeling

● Bracket (1)



● Bracket (2)



M3 to M18

M22 to M26

Bracket (1)

Model no.	Applicable cylinder	A	B	D	E	F	G	H
FK-M3	SCPD2-6, CAT-6, SMD2-6	11.6	10	10	3.1 ^{+0.1} ₀	2	M3×0.5	6
FK-M4	SCPD2-10, CAT-10, SMD2-10	11.6	10	10	3.1 ^{+0.1} ₀	2	M4×0.7	6
FK-M5	SCPD2-16, CAT-15, SMD2-16 SSD-12-N	13.9	12	10	3.1 ^{+0.1} ₀	2	M5×0.8	8
FK-M6	SMD2-20, SSD-16-N	13.9	12	10	3.1 ^{+0.1} ₀	2	M6×1.0	8
FK-M8 × 1.0	CMK2-20, CMA2-20, JSK2-20, JSM2-20	21.9	19	15	5.1 ^{+0.1} ₀	3	M8×1.0	13
FK-M8 × 1.25	SMD2-25, SSD-20-N, SCM-20	21.9	19	15	5.1 ^{+0.1} ₀	3	M8×1.25	13
FK-M10	CMK2-25/32, CMA2-30, SMD2-32, SSD-25-N, SCG-32, SCM-25/32, FCD-25-N, JSK2-25/32, JSM2-30	21.9	19	15	5.1 ^{+0.1} ₀	3	M10×1.25	13
FK-M12	CMK2-40, CMA2-40, JSK2-40, JSM2-40	27.7	24	15	5.1 ^{+0.1} ₀	3	M12×1.5	18
FK-M14	SCA2-40, SSD-32/40-N, SCG-40, SCM-40, FCD-32/40-N, JSC3-40	27.7	24	15	5.1 ^{+0.1} ₀	3	M14×1.5	18
FK-M16	CAV2-50	37	32	20	7.1 ^{+0.1} ₀	4	M16×1.5	23
FK-M18	SCA2-50/63, SSD-50/63-N, SCM-50/63, SCG-50/63, FCD-50/63-N, JSC3-50/63	37	32	20	7.1 ^{+0.1} ₀	4	M18×1.5	23
FK-M22	SCA2-80, SSD-80-N, JSC3-80, SCG-80, SCM-80, CAV2-75/100	53.1	46	28	12.1 ^{+0.1} ₀	7	M22×1.5	32
FK-M26	SCA2-100, SSD-100-N, SCM-100, JSC3-100, SCG-100	53.1	46	28	12.1 ^{+0.1} ₀	7	M26×1.5	32

Bracket (2)

Model no.	Applicable cylinder	J	K	L	M	N	O	P	Q	R	S
FK-M3	SCPD2-6, CAT-6, SMD2-6	6	3 ⁰ _{-0.1}	16	14	7	24	34	4.5	8	—
FK-M4	SCPD2-10, CAT-10, SMD2-10	6	3 ⁰ _{-0.1}	16	14	7	24	34	4.5	8	—
FK-M5	SCPD2-16, CAT-15, SMD2-16 SSD-12-N	6	3 ⁰ _{-0.1}	19	16	9	26	36	4.5	9.5	—
FK-M6	SMD2-20, SSD-16-N	6	3 ⁰ _{-0.1}	19	16	9	26	36	4.5	9.5	—
FK-M8 × 1.0	CMK2-20, CMA2-20, JSK2-20, JSM2-20	9	5 ⁰ _{-0.1}	25	25	14	38	52	7	12.5	—
FK-M8 × 1.25	SMD2-25, SSD-20-N, SCM-20	9	5 ⁰ _{-0.1}	25	25	14	38	52	7	12.5	—
FK-M10	CMK2-25/32, CMA2-30, SMD2-32, SSD-25-N, SCG-32, SCM-25/32, FCD-25-N, JSK2-25/32, JSM2-30	9	5 ⁰ _{-0.1}	25	25	14	38	52	7	12.5	—
FK-M12	CMK2-40, CMA2-40	9	5 ⁰ _{-0.1}	32	32	19	50	70	9	16	—
FK-M14	SCA2-40, SSD-32/40-N, SCG-40, SCM-40, FCD-32/40-N, JSC3-40	9	5 ⁰ _{-0.1}	32	32	19	50	70	9	16	—
FK-M16	CAV2-50	12	7 ⁰ _{-0.1}	44	42	25	62	85	11	22	—
FK-M18	SCA2-50/63, SSD-50/63-N, SCM-50/63, SCG-50/63, FCD-50/63-N, JSC3-50/63	12	7 ⁰ _{-0.1}	44	42	25	62	85	11	22	—
FK-M22	SCA2-80, SSD-80-N, JSC3-80, SCG-80, SCM-80, CAV2-75/100	22	12 ⁰ _{-0.1}	65	59	34	90	120	14	13.5	38
FK-M26	SCA2-100, SSD-100-N, SCM-100, JSC3-100, SCG-100	22	12 ⁰ _{-0.1}	65	59	34	90	120	14	13.5	38