

Flow control valve, inline type with push in joint

SCL Series

Appropriate for space saving

• Port size: M5, 4, 6, 8 dia.

JIS symbol



Specifications

Descriptions	SCL-M54	SCL-M56	SCL-H44	SCL-H66	SCL-H88
Working fluid	Compressed air				
Port size	M5		4 dia.	6 dia.	8 dia.
Product mass g	12.5	13.4	13.9	18.8	31
Applicable tube I.D.	4 dia.	6 dia.	4 dia.	6 dia.	8 dia.
Max. working pressure MPa	1.0				
Min. working pressure MPa	0.05				
Withstanding pressure MPa	1.5				
Fluid temperature °C	5 to 60				
Ambient temperature °C	0 to 60				
Free flow	Flow rate ℓ/min (ANR)	50		227	469
	Ef. sec. area mm^2	0.75		3.4	7.0
Controlled flow	Flow rate ℓ/min (ANR)	53		227	435
	Ef. sec. area mm^2	0.80		3.4	6.5

Note 1: Flow rate is the atmospheric pressure conversion value at pressure 0.5MPa.

Note 2: Could be frozen by adiabatic expansion depending on air quality (dew point).

How to order



A Port size

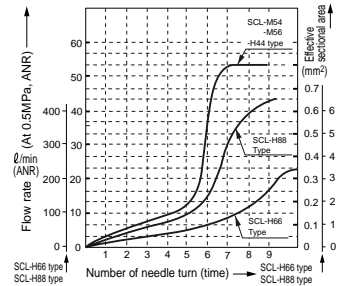
B Tube diameter

C Option

Symbol	Descriptions			
A Port size				
M5	M5			
H4	4 dia.			
H6	6 dia.			
H8	8 dia.			
B Tube diameter				
Port size	M5	H4	H6	H8
4	4 dia.	●	●	
6	6 dia.	●		●
8	8 dia.			●
C Option				
Port size	M5	H4	H6	H8
Blank	Meter out type	●		
	Meter out		●	●
	Meter-in type		●	●
I	Meter-in type	●		
P11	Ozone proof specifications * Note 2	●	●	●

not available.

Flow characteristics

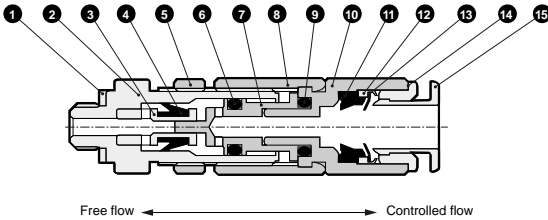


Notes on model No. selection

Note 1: Port size of M5 can be changed by using a part on the following page.

Note 2: Different materials from standard products is used for rubber part.

Internal structure and parts list

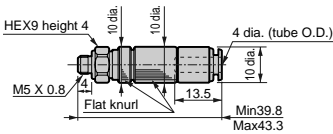


No.	Parts name	Material
1	Gasket	Nitrile rubber + steel
2	Main body	Brass
3	Check section	Brass
4	Packing seal	Nitrile rubber
5	Lock nut	Brass
6	O ring	Nitrile rubber
7	Spindle	Brass
8	Handle	Brass
9	O ring	Nitrile rubber
10	Port (A)	PBT
11	Packing seal	Nitrile rubber
12	Chuck holder	Brass
13	Chuck	Stainless steel
14	Outer ring	Brass
15	Push ring	Polyacetal resin

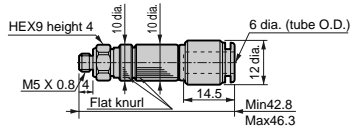
*For all brass parts, electroless nickel plating is done.

Dimensions

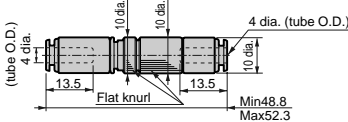
• SCL-M54



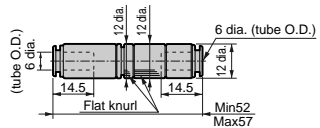
• SCL-M56



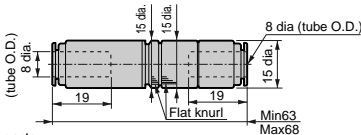
• SCL-H44



• SCL-H66

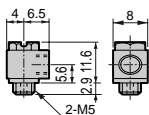


• SCL-H88

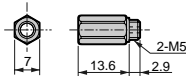


Connection parts

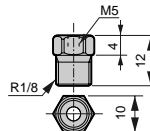
• Elbow FAL-M5



• Extension FLS-M5



• Bush FBS-M56



⚠ Precautions

- Avoid using where large vibration and impact are applied.
- Avoid using where tube moves frequently.
- Use the specified tube and plastic plug.
 - Soft nylon tube (F-15 ** series)
 - Polyurethane rubber tube (U-95 ** series)
 - Urethane tube (NU- ** series)
 - Plastic plug (GWP series)
- Tighten lock nut strongly by a hand after adjusting flow rate.

Refrigerating type dryer

Desiccant type dryer

High polymer membrane dryer

Air filter

Automatic drain other

F.R.L (Module)

F.R.L (Separate)

Small F.R.

Precise R.

Electro pneumatic R.

Auxiliary

Flow control valve

Silencer

Check valve / others

Joint / tube

Vacuum F.

Vacuum R.

Vacuum generator

Vacuum auxiliary / pad

Mechanical pressure SW

Electronic pressure SW

Electronic dif. pres. SW

Seating / close contact conf. SW

Pressure SW for coolant

Flow sensor for air

Total air system

Water cooling refrigerator

Flow sensor for water

Flow control valve

Line type / push in joint

Water cooling refrigerator

Flow sensor for water

Flow control valve

Line type / push in joint

Water cooling refrigerator

Flow sensor for water

Flow control valve

Line type / push in joint

Water cooling refrigerator

Flow sensor for water

Flow control valve

Line type / push in joint