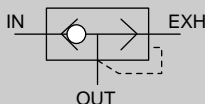


Quick exhaust valve with push-in joint

QEL Series

● Port size: $\varnothing 4$, $\varnothing 6$

JIS symbol



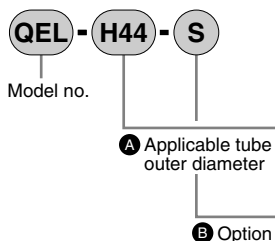
Features

- Compact, space saving inline type
 $\varnothing 4$ or $\varnothing 6$ push-in joint built-in
Release to air type and type with exhaust port joint available
- Standard ozone-resistant materials
Ozone-proof materials for degradation prevention are used as a standard for the check packing.
- Environment compatible products
With this RoHS Directive compatible product, all substances which adversely affect the global environment have been eliminated from the materials.

Specifications

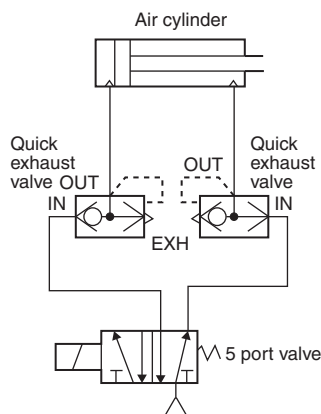
Model no.	QEL-H44		QEL-H44-S	QEL-H66	QEL-H66-S	
Descriptions						
Working fluid	Compressed air					
Max. working pressure	MPa	0.7				
Min. working pressure	MPa	0.1				
Minimum working pressure	MPa	0.05				
Withstanding pressure (at room temperature)	MPa	1.35				
Ambient temperature range	°C	5 to 60 (no freezing)				
Port size	IN, OUT	$\varnothing 4$	$\varnothing 4$	$\varnothing 6$	$\varnothing 6$	
	EXH	$\varnothing 4$	Released to air	$\varnothing 6$	Released to air	
Product weight	g	5.2	3.3	7.6	4.9	
Mounting attitude	Free					
Effective sectional area	IN→OUT	mm ²	1.8	1.8	4	4
	OUT→EXH	mm ²	1.8	1.8	4	4

How to order



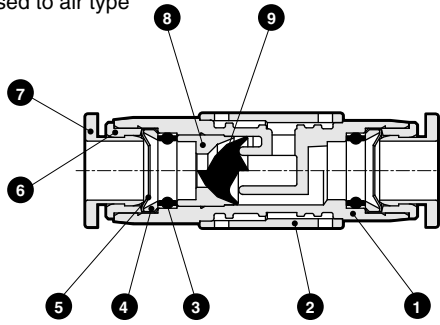
Symbol	Descriptions
A Applicable tube outer diameter	
H44	$\varnothing 4$
H66	$\varnothing 6$
B Option	
Blank	Type with exhaust port joint
S	Released to air type

Applications



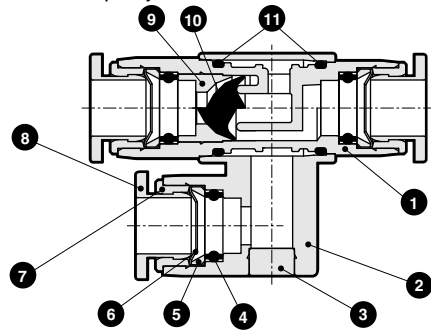
Internal structure and parts list

● Released to air type



No.	Parts name	Material
1	Resin body	PBT
2	Exhaust cover	PBT
3	Rubber sleeve	Nitrile rubber
4	Lock ring	Stainless steel
5	Lock jaw	Brass (with electroless nickel)
6	Guide ring	Brass (with electroless nickel)
7	Release ring	Acetal resin
8	Valving element stopper	Brass (with electroless nickel)
9	Valving element	Hydrogen nitrile rubber

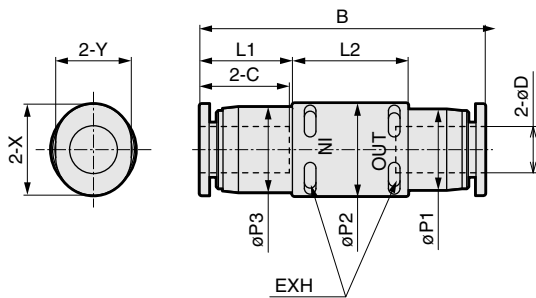
● Type with exhaust port joint



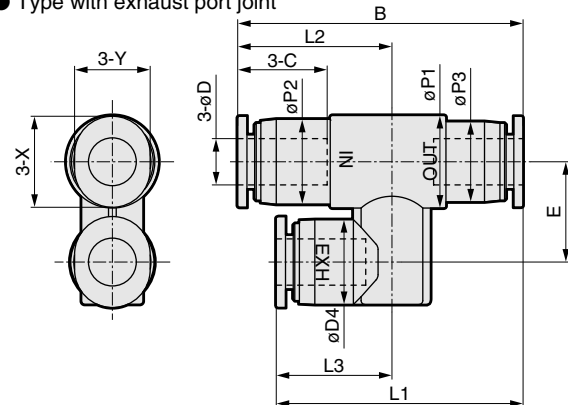
No.	Parts name	Material
1	Resin body	PBT
2	Exhaust joint body	PBT
3	Plug	Brass (with electroless nickel)
4	Rubber sleeve	Nitrile rubber
5	Lock ring	Stainless steel
6	Lock jaw	Brass (with electroless nickel)
7	Guide ring	Brass (with electroless nickel)
8	Release ring	Acetal resin
9	Valving element stopper	Brass (with electroless nickel)
10	Valving element	Hydrogen nitrile rubber
11	O ring	Nitrile rubber

Dimensions

● Released to air type



● Type with exhaust port joint



Symbol	øD Tube outer diameter	B	L1	L2	L3	øP1	øP2	øP3	øP4	C	E	X	Y
QEL-H44	ø4	35.2	30.5	18.8	14.1	10	9	8.4	9	11.3	11	9.8	7.8
QEL-H66	ø6	37.4	32.4	20.2	15.2	12	11	10.4	11	11.8	13	11.8	9.8
QEL-H44-S	ø4	35.2	11.3	15	–	8.4	10	9	–	11.3	–	9.8	7.8
QEL-H66-S	ø6	37.4	12.2	15	–	10.4	12	11	–	11.8	–	11.8	9.8

Safety precautions

- Always use within the product specifications.
- This product is for compressed air. Avoid using with other fluids.
- Securely insert the tube to the tube end, and make sure that the tube cannot be pulled off.
- Always provide a differential pressure when using as a shuttle valve. The product could malfunction if there is no differential pressure.

Refrigerating type dryer
Desiccant type dryer
High polymer membrane type dryer
Air filter
Auto. drain / others
F.R.L. (Module unit)
F.R.L. (Separate)
Compact F.R.
Precise regulator
F.R.L. (Related products)
Clean F.R.
Electro pneumatic regulator
Air booster
Speed control valve
Silencer
Check valve / others
Joint / tube
Vacuum filter
Vacuum regulator
Suction plate
Magnetic spring buffer
Mechanical pressure SW
Electronic pressure SW
Contact / close contact cont. SW
Air sensor
Pressure SW for coolant
Small flow sensor
Small flow controller
Flow sensor for air
Flow sensor for water
Total air system
Total air system (Gamma)

Ending

Quick exhaust valve
Auxiliary valve