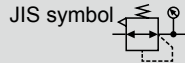




Regulator Standard white series
R1000/R2000/R3000
R4000/R6000/R8000-W Series

Low profile with built in pressure gauge.
 Port size: 1/8 to 1



Specifications

Descriptions	R1000-W	R2000-W	R3000-W	R4000-W	R6000-W	R8000-W
Exterior						
Working fluid	Compressed air					
Max. working pressure MPa	1					
Withstanding pressure MPa	1.5					
Ambient temperature range °C	5 to 60					Note 1
Set pressure range MPa	0.05 to 0.85					
Relief	With relief mechanism					
Port size Rc, NPT, G	1/8, 1/4 (3/8 uses an adaptor)	1/4, 3/8 (1/2 uses an adaptor)	1/4, 3/8 (1/2 uses an adaptor)	1/4, 3/8, 1/2 (3/4 uses an adaptor)	3/4, 1 (1 1/4 uses an adaptor)	3/4, 1 (1 1/4 uses an adaptor)
Product weight kg	0.16	0.31	0.45	0.7	1.0	1.6
Standard accessories	Pressure gauge, nut for panel mount					Pressure gauge

Note 1: The working temperature for the PPD option "R1" is 5 to 50°C.

Ozone specifications (Page 187)

R * 000 - ... - W ... - P11

Clean specification (Catalog No. CB-033SA)

- Dust generation preventing structure for use in cleanrooms

R * 000 - - P7*

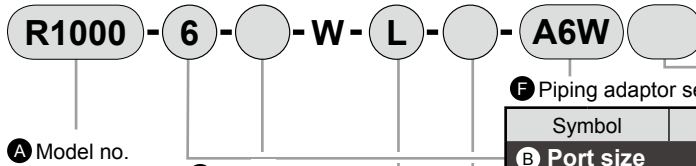
Specification for LiB production (Catalog No. CC-947)

- Specification for LiB manufacturing process

R * 000 - - P4*

How to order

* Refer top page 9 for an explanation of the options.



A Model no.					
R	R	R	R	R	R
1	2	3	4	6	8
0	0	0	0	0	0
0	0	0	0	0	0
0	0	0	0	0	0

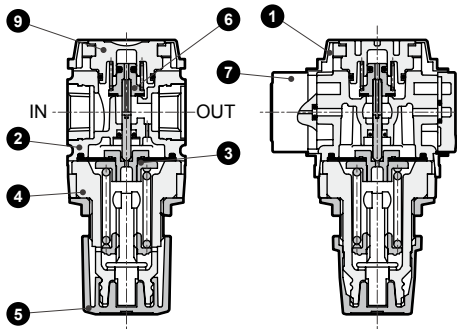
F Piping adaptor set (included)		Note 4 pages 155 to 157 Note 8					
Symbol	Descriptions						
B Port size							
6	1/8	●					
8	1/4	●	●	●	●		
10	3/8		●	●	●		
15	1/2				●		
20	3/4					●	●
25	1					●	●
C Port thread type							
		Note 1					
Blank	Rc thread	●	●	●	●	●	●
N	NPT thread	●	●	●	●	●	●
G	G thread	●	●	●	●	●	●
D Option							
		Note 2					
Pressure Range	Blank	0.05 to 0.85MPa	●	●	●	●	●
	L	0.05 to 0.35MPa	Note 7	●	●	●	●
Relief	Blank	With relief mechanism	●	●	●	●	●
	N	Non-relief type	●	●	●	●	●
Pressure gauge	Blank	Standard pressure gauge (G401-W)	●	●	●	●	●
	T	Without pressure gauge (gauge port (Rc1/4) assembled sealed)	●	●	●	●	●
	T8	Pressure gauge attachable (gauge port (Rc1/4) assembled open)	●	●	●	●	●
	T6 Note 3	Compatibility with digital pressure sensor PPX	●	●	●	●	●
Flow Direction	Blank	Standard flow (left to right)	●	●	●	●	●
	X1	Reverse flow (right to left)	●	●	●	●	●
E Displayed unit							
Blank	MPa display, Rc thread	●	●	●	●	●	●
J1	MPa display, NPT, G thread	●	●	●	●	●	●
F Piping adaptor set (included)							
Blank	Not attached	●	●	●	●	●	●
A6*W	1/8 piping adaptor set	●					
A8*W	1/4 piping adaptor set	●	●	●	●		
A10*W	3/8 piping adaptor set	●	●	●	●		
A15*W	1/2 piping adaptor set		●	●	●		
A20*W	3/4 piping adaptor set				●	●	●
A25*W	1 piping adaptor set					●	●
A32*W	1 1/4 piping adaptor set					●	●
* Adaptor thread type							
Blank	Rc thread	●	●	●	●	●	●
N	NPT thread	●	●	●	●	●	●
G	G thread	●	●	●	●	●	●
G Attachment							
		Page 152, 200					
Blank	Not attached	●	●	●	●	●	●
BW	C type bracket	●	●	●	●	●	●
B3W Note 5	L type bracket	●	●	●	●	●	
B4W	B type bracket		●				
G45P	G45D-8-P10 (L: G45D-8-P04)	●	●	●	●	●	●
G49P	G49D-8-P10 (L: G49D-8-P04)	●	●	●	●	●	●
G59P	G59D-8-P10 (L: G59D-8-P04)	●	●	●	●	●	●
G40P	G40D-8-P10 (L: G40D-8-P04)	●	●	●	●	●	●
G50P	G50D-8-P10 (L: G50D-8-P04)	●	●	●	●	●	●
G41P	G41D-8-P10 (L: G41D-8-P04)	●	●	●	●	●	●
G52P	G52D-8-P10 (L: G52D-8-P10)	●	●	●	●	●	●
R2 Note 3	Digital pressure sensor: PPX-R10N-6M	●	●	●	●	●	●

⚠ Cautions for model No. selection

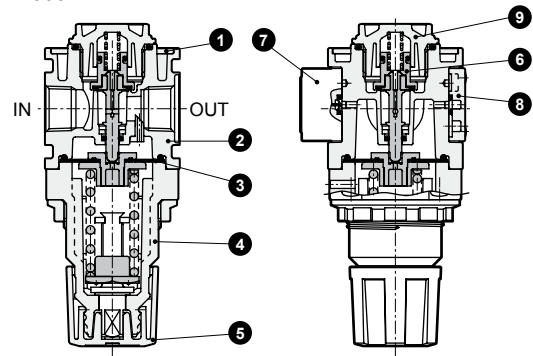
- Note 1: G and NPT threads are available for IN, OUT, and gauge ports.
- Note 2: When selecting options for several items, list options in order from the top.
- Note 3: When option "T6" is selected, only "blank" or "R2" is selected for the (G) pressure gauge (enclosed). The digital pressure sensor PPX mounting port (Rc1/8) is assembled ventilated.
- Note 4: The piping adapter set and C bracket cannot be used together.
- Note 5: Refer to Section 2. Regulator, in "⚠ PRECAUTIONS for Installation and Adjustment" (page 15) for details on mounting the L-type bracket.
- Note 6: If NPT is selected for the "C" piping thread type, a NPT pressure gauge is enclosed. If Rc or G thread is selected, an R thread pressure gauge is enclosed.
- Note 7: Pressure gauge display range will be 0 to 0.4 MPa for option "L".
- Note 8: A joiner set is attached with the piping adapter set.
- Note 9: Output type will be NPN transistor output. Consult with CKD if PNP transistor output is required.

Internal structure and parts list

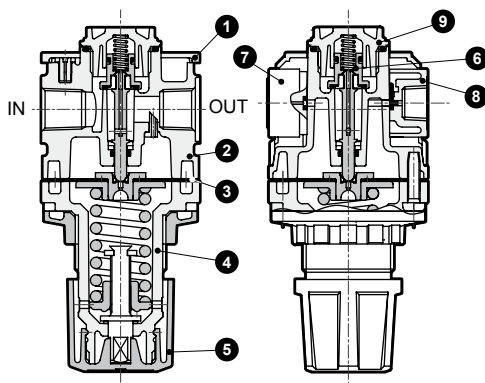
● R1000-W



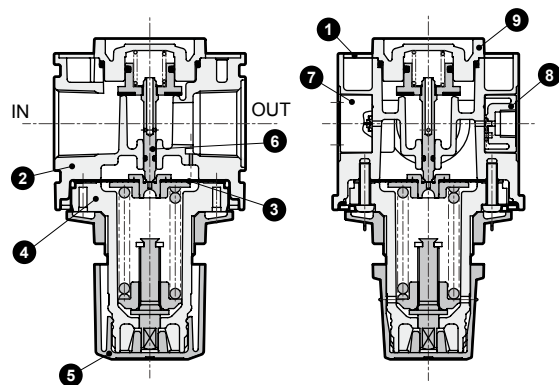
● R2000-W



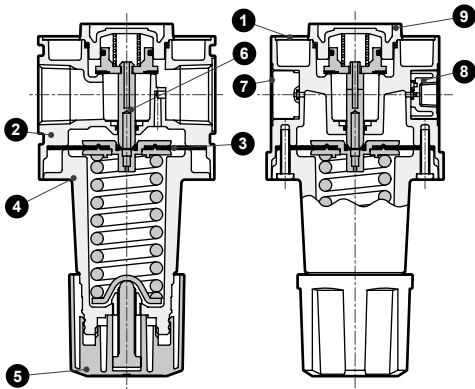
● R3000-W·R4000-W



● R6000-W



● R8000-W



No.	Part name	Material					
		R1000-W	R2000-W	R3000-W	R4000-W	R6000-W	R8000-W
1	Plate cover	ABS resin					
2	Body	Polyamide resin, steel	Aluminum alloy die-casting	Aluminum alloy die-casting			
3	Diaphragm assembly	Polyacetal resin nitrile rubber		Zinc alloy die-casting, nitrile rubber Note 3			
4	Cover	Polyamide resin	PBT Resin				Aluminum alloy die-casting
5	Knob	Polyacetal resin					
6	Valve assembly	Brass, hydrogenated nitrile rubber (polyacetal resin: R2100-W, R3100-W, R4100-W only)					
7	Pressure gauge assembly	PBT resin, polyacetal resin, polycarbonate resin, nitrile rubber, brass, steel					
8	Gauge plug assembly	Polyacetal resin nitrile rubber					
	Blanking plug assembly Note 1	PBT resin, nitrile rubber, copper		-		-	-
9	Bottom plug Note 4	Polyacetal resin				Aluminum alloy die-casting	

Note 1: A blank plug is enclosed with the R1000-W standard type.

Note 2: Refer to page 128 for repair parts.

Note 3: Aluminum will be added for R6000-W for low pressure.

Note 4: The material for RM3000-W, RM4000-W is aluminum alloy die casting.

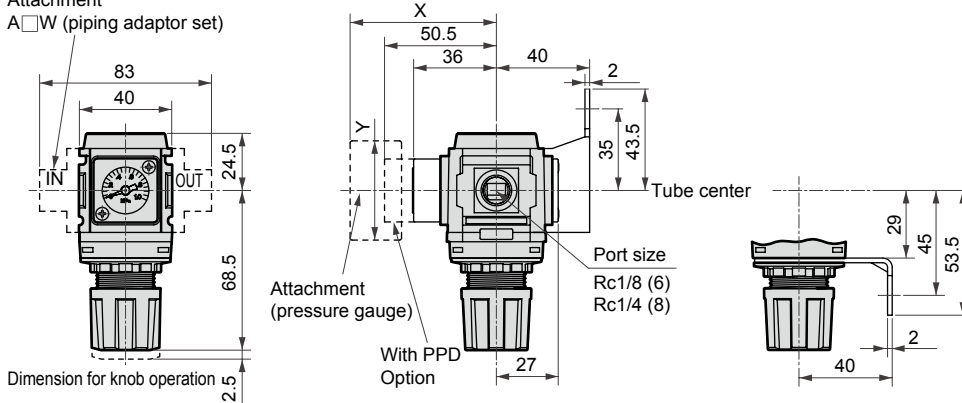
Regulator Series

Dimensions

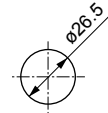


● R1000-W

Attachment
A□W (piping adaptor set)



Panel cut dimensions

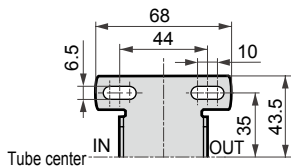


Panel thickness: Max. 6mm

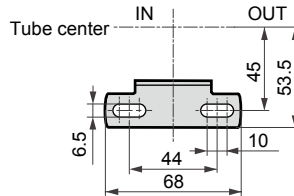
Option dimensions with pressure gauge attached

Attached pressure gauge	X	Y
G45P	(74)	ø39
G49P	(73.5)	ø43.5
G59P	(76)	ø52
G40P	(75.5)	ø42.5
G50P	(75.5)	ø52.5
G41P	(74)	ø42
G52P	(86)	ø52.5
R2	(74)	□30

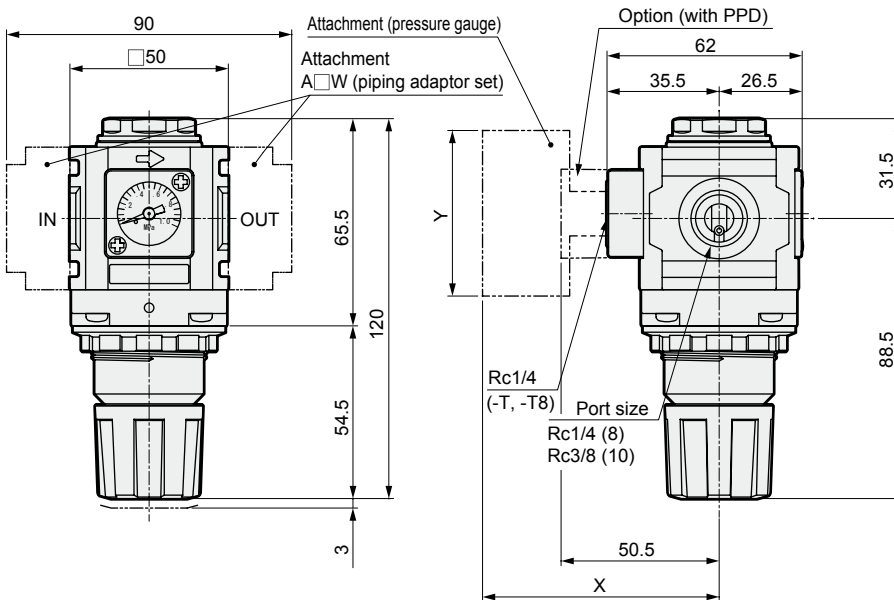
Attachment
C type bracket (-BW)
Part no: B120



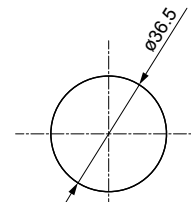
L type bracket (-B3W)
Part no: B130



● R2000-W



Panel cut dimensions

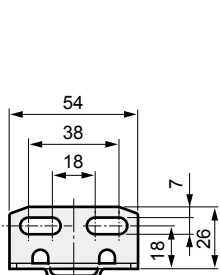


Panel thickness: Max. 4mm

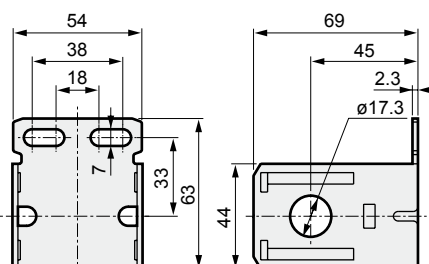
Option dimensions with pressure gauge attached

Attached pressure gauge	X	Y
G45P	(73.5)	ø39
G49P	(73)	ø43.5
G59P	(75.5)	ø52
G40P	(75)	ø42.5
G50P	(75)	ø52.5
G41P	(73.5)	ø42
G52P	(85.5)	ø52.5
R2	(73)	□30

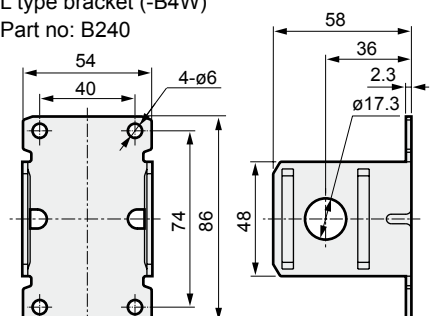
● L type bracket (-B3W)
Part no: B230



● C type bracket (-BW)
Part no: B220



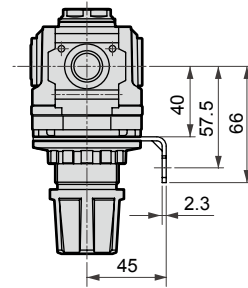
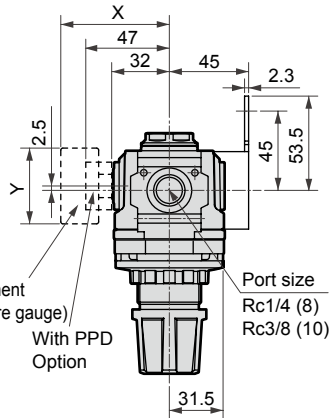
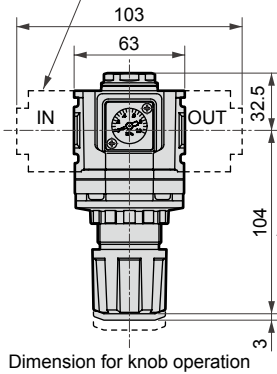
● L type bracket (-B4W)
Part no: B240



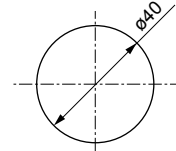
Dimensions

● R3000-W

Attachment
A□W (piping adaptor set)

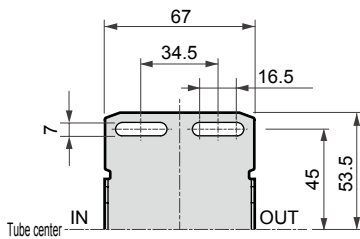


Panel cut dimensions

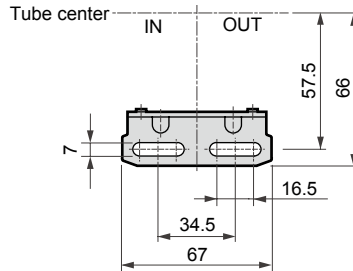


Panel thickness: Max. 7mm

· Attachment (C type bracket)
C type bracket (-BW)
Part no: B320



L type bracket (-B3W)
Part no: B330

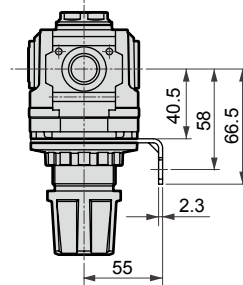
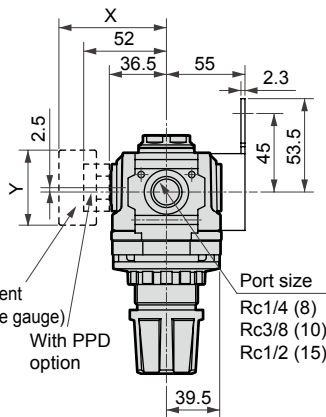
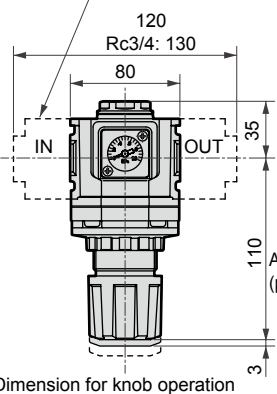


Option dimensions with pressure gauge attached

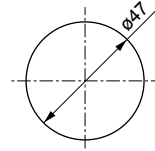
Attached pressure gauge	X	Y
G45P	(70)	ø39
G49P	(69.5)	ø43.5
G59P	(72)	ø52
G40P	(71.5)	ø42.5
G50P	(71.5)	ø52.5
G41P	(70)	ø42
G52P	(82)	ø52.5
R2	(69.5)	□30

● R4000-W

Attachment
A□W (piping adaptor set)

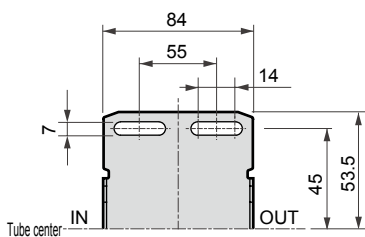


Panel cut dimensions

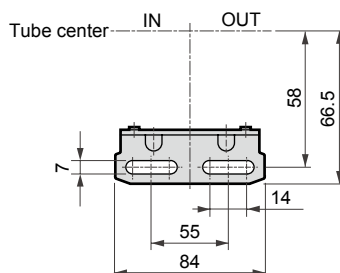


Panel thickness: Max. 7mm

· Attachment
C type bracket (-BW)
Part no: B420



L type bracket (-B3W)
Part no: B430



Option dimensions with pressure gauge attached

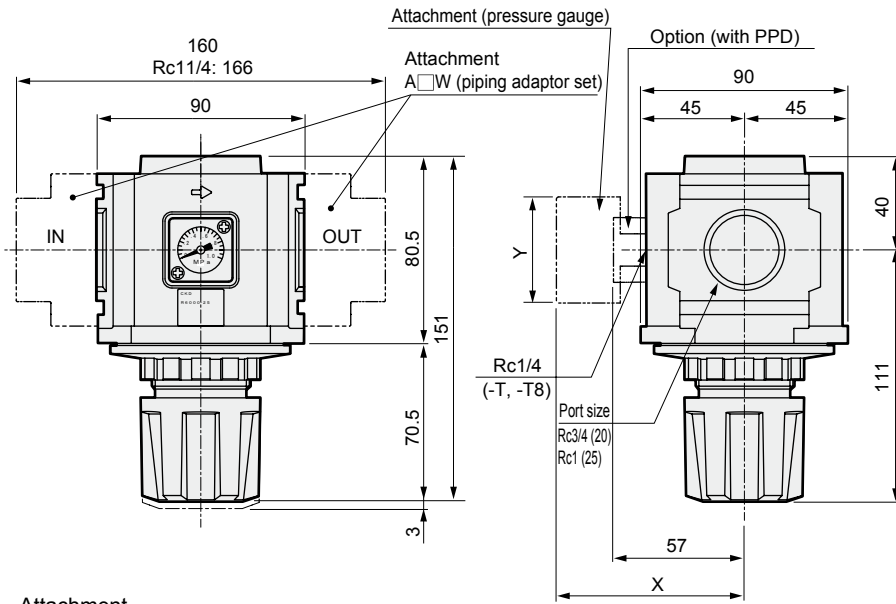
Attached pressure gauge	X	Y
G45P	(75)	ø39
G49P	(74.5)	ø43.5
G59P	(77)	ø52
G40P	(76.5)	ø42.5
G50P	(76.5)	ø52.5
G41P	(75)	ø42
G52P	(86)	ø52.5
R2	(75)	□30

Regulator Series

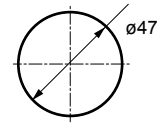
Dimensions



● R6000-W



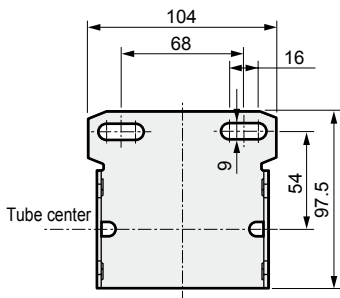
Panel cut dimensions



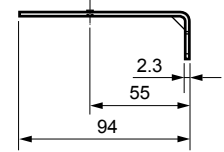
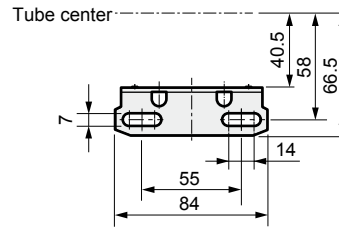
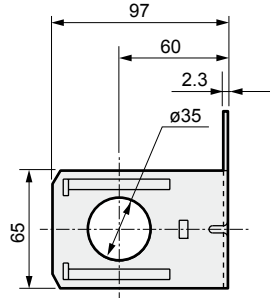
Option dimensions with pressure gauge attached

Attached pressure gauge	X	Y
G45P	(80)	ø39
G49P	(79.5)	ø43.5
G59P	(82)	ø52
G40P	(81.5)	ø42.5
G50P	(87.5)	ø52.5
G41P	(80)	ø42
G52P	(93)	ø52.5
R2	(80)	□30

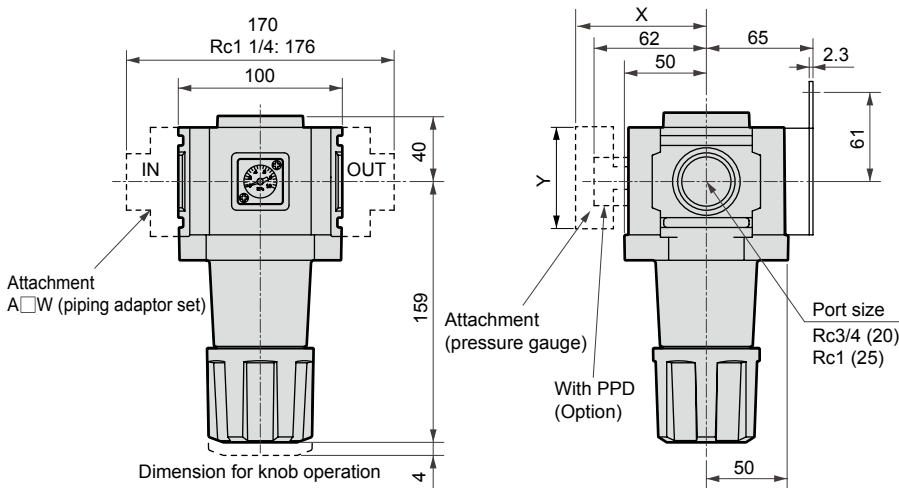
· Attachment
C type bracket (-BW)
Part no: B620



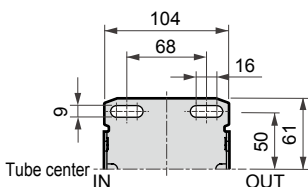
L type bracket (-B3W)
Part no: B430



● R8000-W



· Attachment
C type bracket (-BW)
Part no: B820



Option dimensions with pressure gauge attached

Attached pressure gauge	X	Y
G45P	(85)	ø39
G49P	(84.5)	ø43.5
G59P	(87)	ø52
G40P	(86.5)	ø42.5
G50P	(86.5)	ø52.5
G41P	(85)	ø42
G52P	(98)	ø52.5
R2	(85)	□30



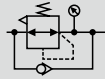
Reverse regulator Standard white series

R1100/R2100/R3100 R4100/R6100/R8100-W Series

From secondary pressure to primary pressure with back flow function.

Port size: 1/8 to 1

JIS symbol



Specifications

Descriptions	R1100-W	R2100-W	R3100-W	R4100-W	R6100-W	R8100-W
Exterior						
Working fluid	Compressed air					
Max. working pressure MPa	1.0					
Withstanding pressure MPa	1.5					
Ambient temperature range °C	5 to 60					Note 3
Set pressure range (Note 2) MPa	0.05 to 0.85					
Relief	With relief mechanism					
Port size Rc, PT,	1/8, 1/4 (3/8 uses an adaptor)	1/4, 3/8 (1/2 uses an adaptor)	1/4, 3/8 (1/2 uses an adaptor)	1/4, 3/8, 1/2 (3/4 uses an adaptor)	3/4, 1 (1 1/4 uses an adaptor)	3/4, 1 (1 1/4 uses an adaptor)
Product weight kg	0.16	0.31	0.45	0.7	1.0	1.6
Standard accessories	Pressure gauge, nut for panel mount					Pressure gauge

Note 1: Check that the primary pressure is at least 0.05 MPa or more than the secondary pressure.

Note 2: Refer to the set pressure range for the back pressure given on page 123 when selecting the model.

Note 3: The working temperature range of the pressure switch with indicator PPD assembly "R1" is 5 to 50°C.

Ozone specifications (Page 188)

R * 100 - ...W... - **P11**

Clean specification (Catalog No. CB-033SA)

● Dust generation preventing structure for use in cleanrooms

R * 100 - - **P7***

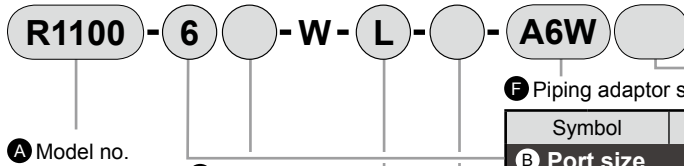
Specification for LiB production (Catalog No. CC-947)

● Specification for LiB manufacturing process

R * 100 - - **P4***

How to order

* Refer top page 9 for an explanation of the options.



A Model no.					
R1	R2	R3	R4	R6	R8
1	1	1	1	1	1
0	0	0	0	0	0
0	0	0	0	0	0

Symbol	Descriptions						
B Port size							
6	1/8	●					
8	1/4	●	●	●	●		
10	3/8		●	●	●		
15	1/2				●		
20	3/4					●	●
25	1					●	●

C Port thread type		Note 1					
Blank	Rc thread	●	●	●	●	●	●
N	NPT thread	●	●	●	●	●	●
G	G thread	●	●	●	●	●	●

D Option		Note 2, Note 4					
Pressure Range	Blank	0.05 to 0.85MPa	●	●	●	●	●
	L	0.05 to 0.35MPa Note 8	●	●	●	●	●
Relief	Blank	With relief mechanism	●	●	●	●	●
	N	Non-relief type	●	●	●	●	●
Pressure gauge	Blank	Standard pressure gauge (G401-W)	●	●	●	●	●
	T	Without pressure gauge (gauge port (Rc1/4) assembled sealed)	●	●	●	●	●
	T8	Pressure gauge attachable (gauge port (Rc1/4) assembled open)	●	●	●	●	●
	T6 Note 3	Compatibility with digital pressure sensor PPX	●	●	●	●	●
Flow Direction	Blank	Standard flow (left to right)	●	●	●	●	●
	X1	Reverse flow (right to left)	●	●	●	●	●

E Displayed unit							
Blank	MPa display, Rc thread	●	●	●	●	●	●
J1	MPa display, NPT, G thread	●	●	●	●	●	●

F Piping adaptor set (included)		Note 5 pages 155 to 157 Note 9					
Blank	Not attached	●	●	●	●	●	●
A6*W	1/8 piping adaptor set	●					
A8*W	1/4 piping adaptor set	●	●	●	●		
A10*W	3/8 piping adaptor set	●	●	●	●		
A15*W	1/2 piping adaptor set		●	●	●		
A20*W	3/4 piping adaptor set				●	●	●
A25*W	1 piping adaptor set					●	●
A32*W	1 1/4 piping adaptor set					●	●

* Adaptor thread type							
Blank	Rc thread	●	●	●	●	●	●
N	NPT thread	●	●	●	●	●	●
G	G thread	●	●	●	●	●	●

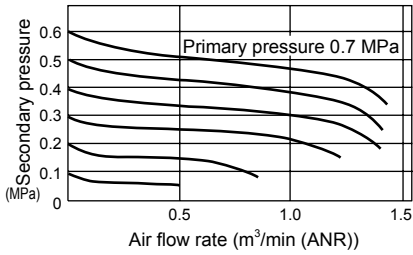
G Attachment		Page 152, 200					
Blank	Not attached	●	●	●	●	●	●
BW	C type bracket	●	●	●	●	●	●
B3W Note 6	L type bracket	●	●	●	●	●	
B4W	B type bracket		●				
G45P	G45D-8-P10 (L: G45D-8-P04)	●	●	●	●	●	●
G49P	G49D-8-P10 (L: G49D-8-P04)	●	●	●	●	●	●
G59P	G59D-8-P10 (L: G59D-8-P04)	●	●	●	●	●	●
G40P	G40D-8-P10 (L: G40D-8-P04)	●	●	●	●	●	●
G50P	G50D-8-P10 (L: G50D-8-P04)	●	●	●	●	●	●
G41P	G41D-8-P10 (L: G41D-8-P04)	●	●	●	●	●	●
G52P	G52D-8-P10 (L: G52D-8-P10)	●	●	●	●	●	●
R2 Note 3	Digital pressure sensor: PPX-R10N-6M	●	●	●	●	●	●

- ⚠ Cautions for model No. selection**
- Note 1: G and NPT threads are available for IN, OUT, and gauge ports.
 - Note 2: When selecting options for several items, list options in order from the top.
 - Note 3: When option "T6" is selected, only "blank" or "R2" is selected for the (G) pressure gauge (enclosed). The digital pressure sensor PPX mounting port (Rc1/8) is assembled ventilated.
 - Note 4: Position of the check valve and pressure gauge can not be changed. If the reverse direction of IN and OUT are required, indicate "X1" in the end of optional section.
 - Note 5: The piping adapter set and C bracket cannot be used together.
 - Note 6: Refer to Section 2. Regulator, in "⚠ PRECAUTIONS for Installation and Adjustment" (page 15) for details on mounting the L-type bracket.
 - Note 7: If NPT is selected for the "C" piping thread type, a NPT pressure gauge is enclosed. If Rc or G thread is selected, an R thread pressure gauge is enclosed.
 - Note 8: Pressure gauge display range will be 0 to 0.4 MPa for option "L".
 - Note 9: A joiner set is attached with the piping adapter set.
 - Note 10: Out put type will be NPN transistor output. Consult with CKD if PNP transistor output is required.

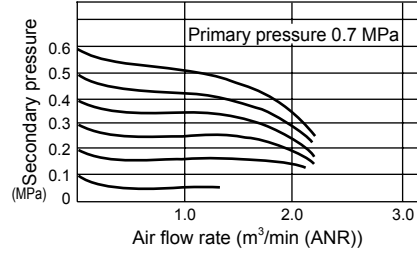
Regulator series

Flow characteristics

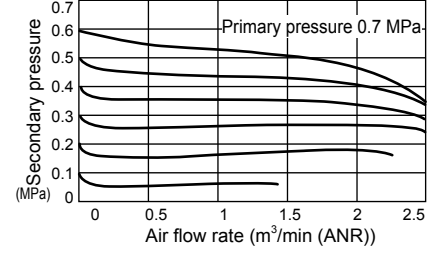
● R1100-6-W



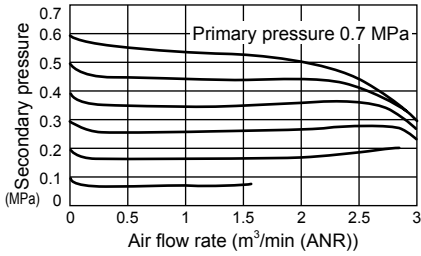
● R1100-8-W



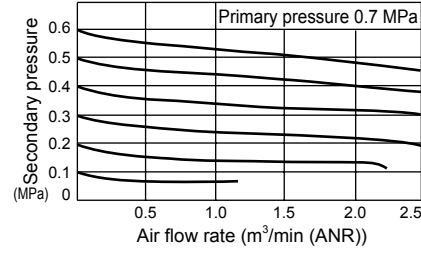
● R2100-8-W



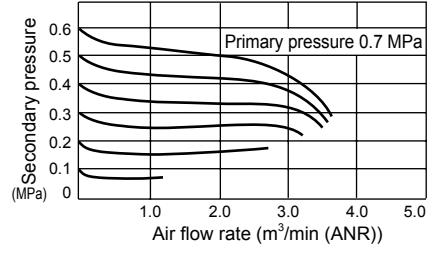
● R2100-10-W



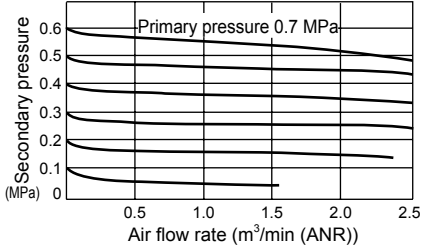
● R3100-8-W



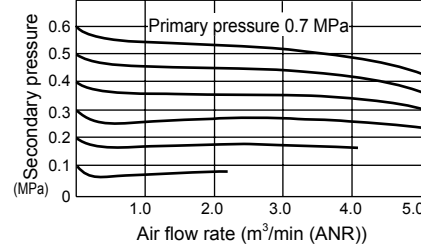
● R3100-10-W



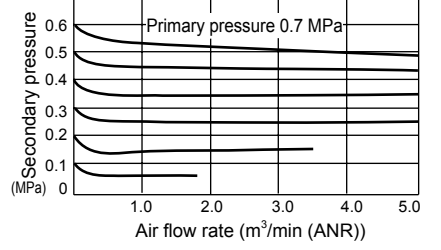
● R4100-8-W



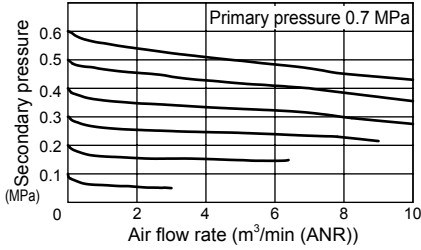
● R4100-10-W



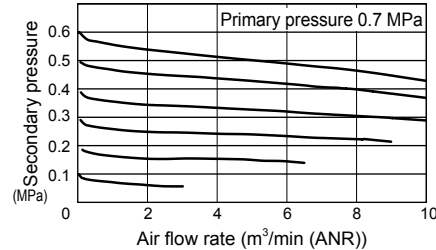
● R4100-15-W



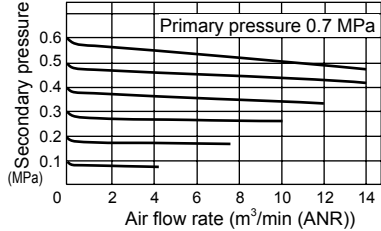
● R6100-20-W



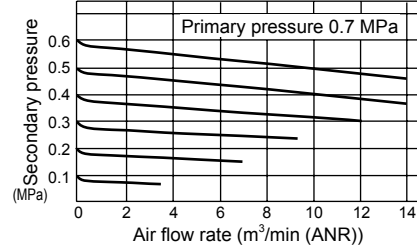
● R6100-25-W



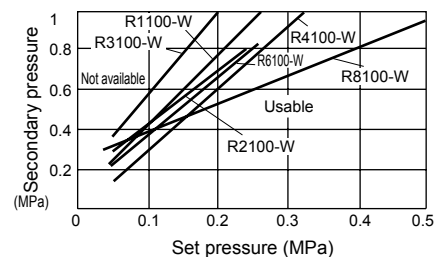
● R8100-20-W



● R8100-25-W



● Set pressure range for back pressure

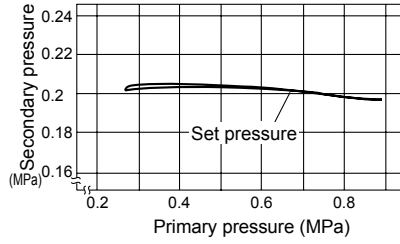


Note: The upper side of the graph is nonusable and the lower side usable.

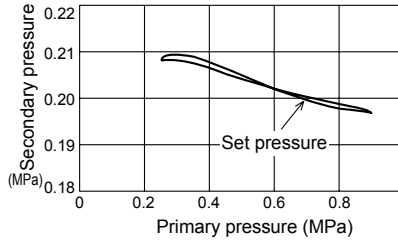
Example: If W4100-W is set to set pressure 0.2 MPa and the secondary back pressure is 0.6 MPa or more, the secondary pressure will not be released to the primary side.

Pressure characteristics

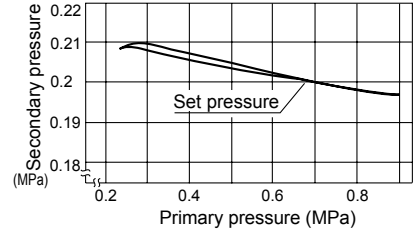
● R1100-W



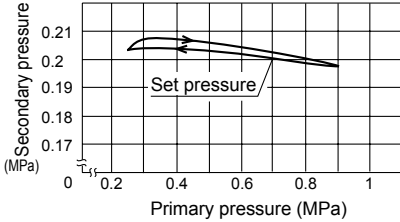
● R2100-W



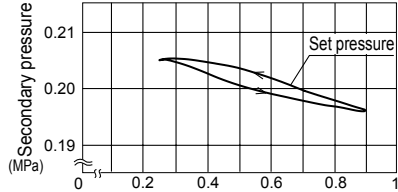
● R3100-W



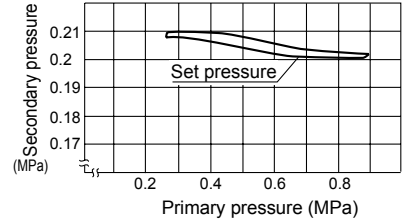
● R4100-W



● R6100-W

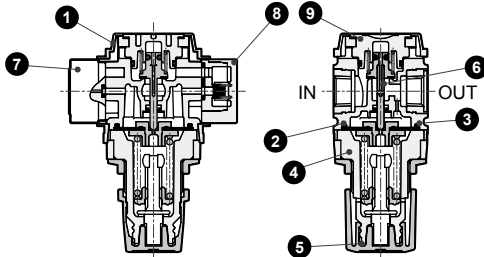


● R8100-W

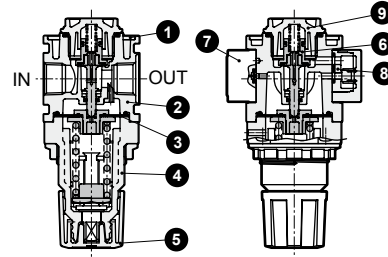


Internal structure and parts list

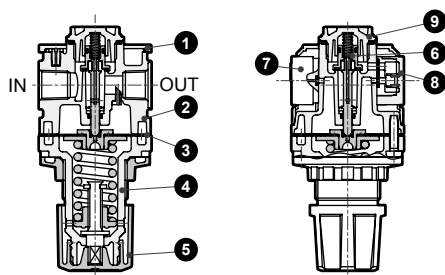
● R1100-W



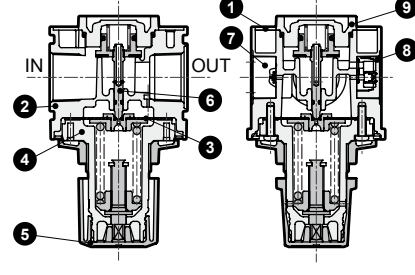
● R2100-W



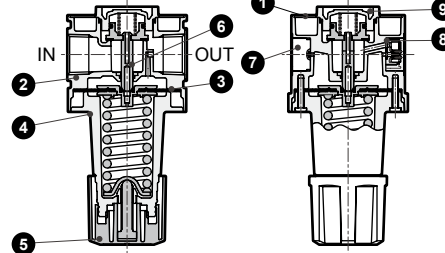
● R3100-W·R4100-W



● R6100-W



● R8100-W

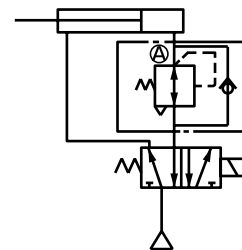


Functional explanation

When the primary pressure is introduced from the IN side, the check valve functions as a regular regulator because it closes with primary pressure and spring load. When primary pressure is released by a changeover valve such as a shut-off valve, the check valve opens with secondary pressure. Pressure in the diaphragm chamber is released and pressure drops. This causes the diaphragm to be pressed down by the pressure adjustment spring. The main valve (valve assembly) opens, and the air on the OUT side is discharged.

● Circuit diagram

When cylinder head side and rod side pressure is different.



Note: Set back pressure A for when the primary pressure is released within the range in the graph for the regulator's set pressure.

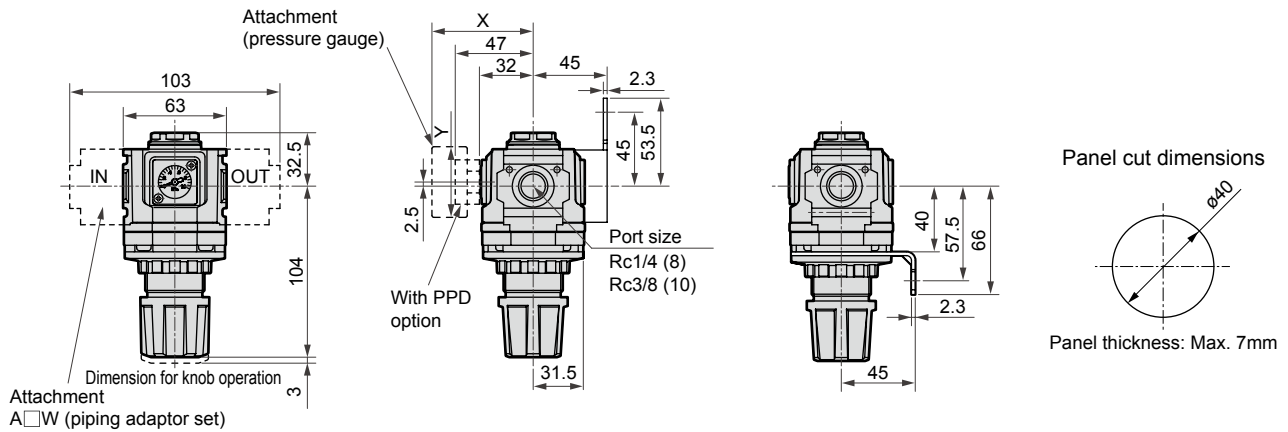
No.	Part name	Material				
		R1100-W	R2100-W	R3100-W	R4100-W	R6100-W
1	Plate cover	ABS resin				
2	Body	Polyamide resin, steel	Aluminum alloy die-casting			
3	Diaphragm assembly	Polyacetal resin nitrile rubber	Zinc alloy die-casting, nitrile rubber Note 2			
4	Cover	Polyamide resin	PBT Resin			Aluminum alloy die-casting
5	Knob	Polyacetal resin				
6	Valve assembly	Brass, hydrogenated nitrile rubber (polyacetal resin: R2100-W, R3100-W, R4100-W only)				
7	Pressure gauge assembly	PBT resin, polyacetal resin, polycarbonate resin, nitrile rubber, brass, copper				
8	Check valve full assembly	PBT resin, nitrile rubber, stainless steel wire, steel				
9	Bottom plug	Polyacetal resin			Aluminum alloy die-casting	

Note 1: Refer to page 128 for repair parts kits.

Note 2: Aluminum will be added for R6000-W for low pressure.

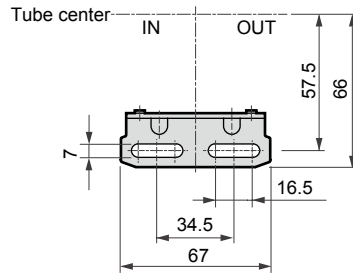
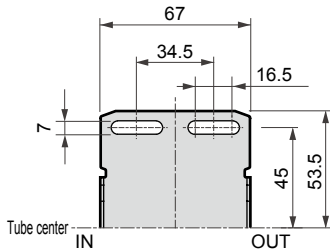
Dimensions

● R3100-W



· Attachment
C type bracket (-BW)
Part no: B320

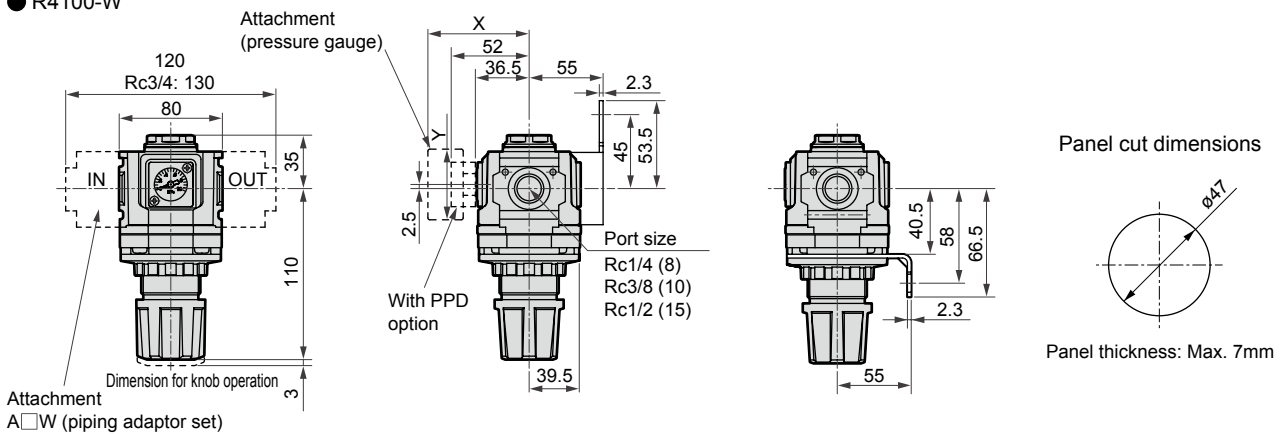
L type bracket (-B3W)
Part no: B330



Option dimensions with pressure gauge attached

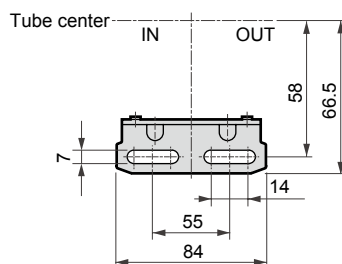
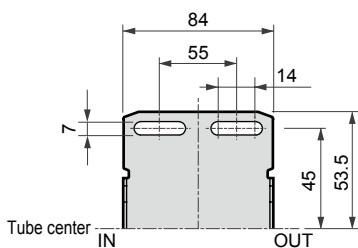
Attached pressure gauge	X	Y
G45P	(70)	ø39
G49P	(69.5)	ø43.5
G59P	(72)	ø52
G40P	(71.5)	ø42.5
G50P	(71.5)	ø52.5
G41P	(70)	ø42
G52P	(82)	ø52.5
R2	(69.5)	□30

● R4100-W



· Attachment
C type bracket (-BW)
Part no: B420

L type bracket (-B3W)
Part no: B430



Option dimensions with pressure gauge attached

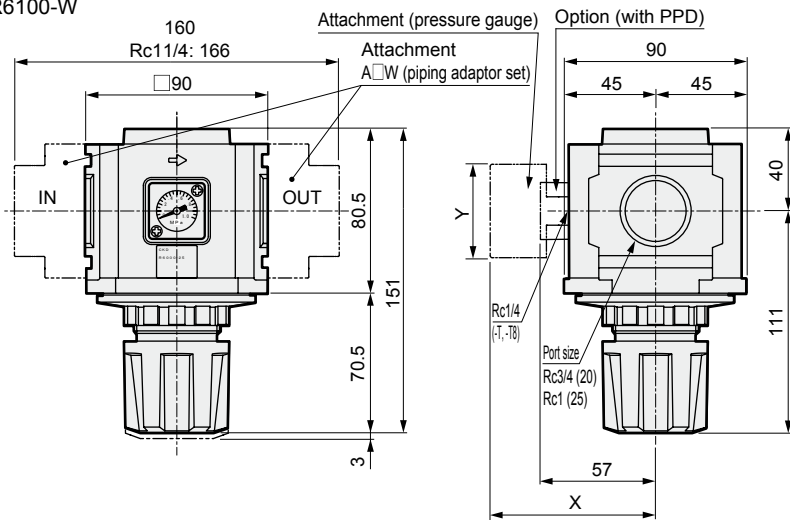
Attached pressure gauge	X	Y
G45P	(75)	ø39
G49P	(74.5)	ø43.5
G59P	(77)	ø52
G40P	(76.5)	ø42.5
G50P	(76.5)	ø52.5
G41P	(75)	ø42
G52P	(86)	ø52.5
R2	(75)	□30

Regulator Series

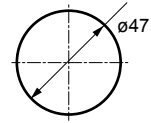
Dimensions



● R6100-W



Panel cut dimensions

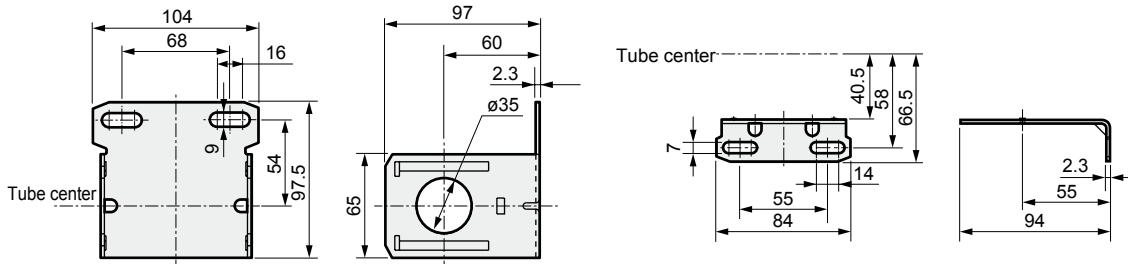


Pressure gauge option dimensions

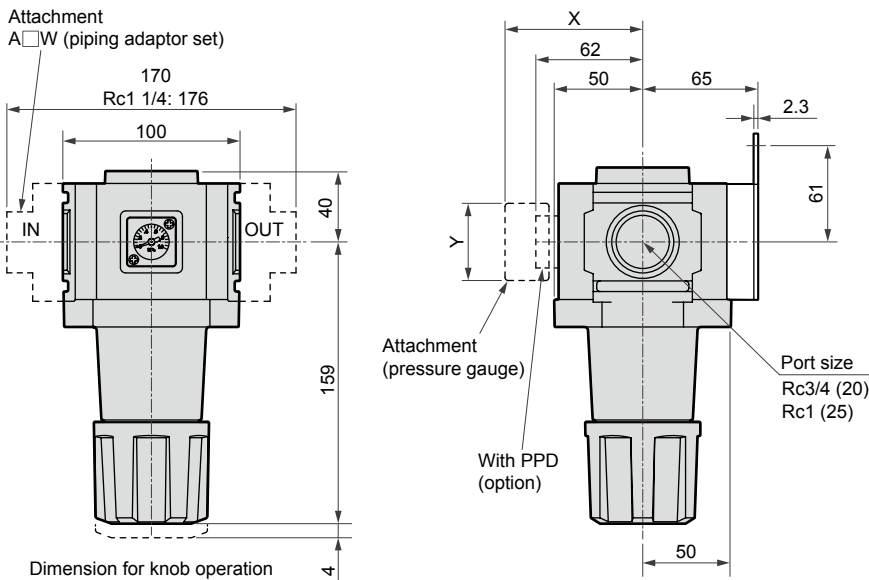
Attached pressure gauge	X	Y
G45P	(80)	ø39
G49P	(79.5)	ø43.5
G59P	(82)	ø52
G40P	(81.5)	ø42.5
G50P	(81.5)	ø52.5
G41P	(80)	ø42
G52P	(93)	ø52.5
R2	(80)	□30

· Attachment
C type bracket (-BW)
Part no: B620

L type bracket (-B3W)
Part no: B430



● R8100-W

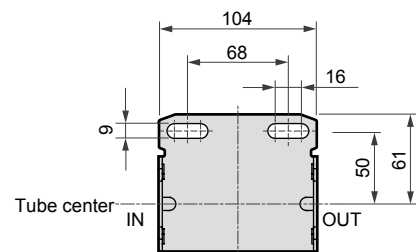


Dimension for knob operation

· Attachment
C type bracket (-BW)
Part no: B820

Option dimensions with pressure gauge attached

Attached pressure gauge	X	Y
G45P	(85)	ø39
G49P	(84.5)	ø43.5
G59P	(87)	ø52
G40P	(86.5)	ø42.5
G50P	(86.5)	ø52.5
G41P	(85)	ø42
G52P	(98)	ø52.5
R2	(85)	□30



Optional parts drawing

Repair parts kit (Set consisting of diaphragm assembly, valve assembly, bottom spring, louver, element, baffle, bowl O ring)

Repair kit model no. Model	Relief type diaphragm	No relief type diaphragm
R1000-W, R1100-W	R1000-KIT	R1000-KIT-N
R2000-W, R2100-W	R2000-W-KIT	R2000-W-KIT-N
R3000-W, R3100-W, RM3000-W	R3000-KIT	R3000-KIT-N
R4000-W, R4100-W, RM4000-W	R4000-KIT	R4000-KIT-N
R6000-W, R6100-W	R6000-KIT R6000-KIT-L (for low pressure range)	R6000-KIT-N R6000-KIT-LN (for low pressure range)
R8000-W, R8100-W	R8000-KIT	R8000-KIT-LN

Valve assembly (valve assembly, bottom spring, bottom O ring set)

Model	Valve assembly model no.
R1000-W, R1100-W	R1000-VALVE-ASSY
R2000-W, R2100-W	R2000-W-VALVE-ASSY
R3000-W, R3100-W, RM3000-W	R3000-VALVE-ASSY
R4000-W, R4100-W, RM4000-W	R4000-VALVE-ASSY
R6000-W, R6100-W	R6000-VALVE-ASSY
R8000-W, R8100-W	R8000-VALVE-ASSY

* Refer to page 211 for gauge plug assembly

Check valve for reverse regulator assembly

Model	Check valve assembly model no.
R1000-W, R1100-W	R1100-W-CHECK-VALVE-ASSY
R2100-W	R3100-W-CHECK-VALVE-ASSY
R3100-W, RM3000-W, W3100-W R4100-W, RM4000-W, W4100-W R6100-W, R8100-W W8100-W	R3100-W-CHECK-VALVE-ASSY

Adjusting spring

Adjusting spring model no. Model	Standard spring (0.05 to 0.85MPa)	Spring for low pressure (0.05 to 0.35MPa)
R1000-W, R1100-W W1000-W, W1100-W	R1000-SPRING	R1000-SPRING-L
R2000-W, R2100-W	R2000-W-SPRING	R2000-W-SPRING-L
R3000-W, R3100-W, RM3000-W W3000-W, W3100-W	R3000-SPRING	R3000-SPRING-L
R4000-W, R4100-W, RM4000-W W4000-W, W4100-W	R4000-SPRING	R4000-SPRING-L
R8000-W, R8100-W	R8000-SPRING	R8000-SPRING-L
W8000-W, W8100-W	W8000-SPRING	W8000-SPRING-L

Diaphragm assembly (diaphragm assembly only)

Diaphragm assembly model no. Model	Relief type Diaphragm	Non-relief type Diaphragm
R1000-W, R1100-W W1000-W, W1100-W	R1000-DIAPHRAGM-ASSY	R1000-DIAPHRAGM-ASSY-N
R2000-W, R2100-W	R2000-DIAPHRAGM-ASSY	R2000-DIAPHRAGM-ASSY-N
R3000-W, R3100-W, RM3000-W W3000-W, W3100-W	R3000-DIAPHRAGM-ASSY	R3000-DIAPHRAGM-ASSY-N
R4000-W, R4100-W, RM4000-W W4000-W, W4100-W	R4000-DIAPHRAGM-ASSY	R4000-DIAPHRAGM-ASSY-N
R6000-W, R6100-W	R6000-DIAPHRAGM-ASSY R6000-DIAPHRAGM-ASSY-L (for low pressure range)	R6000-DIAPHRAGM-ASSY-N R6000-DIAPHRAGM-ASSY-LN (for low pressure range)
R8000-W, R8100-W	R8000-DIAPHRAGM-ASSY	R8000-DIAPHRAGM-ASSY-N
W8000-W, W8100-W	W8000-DIAPHRAGM-ASSY	W8000-DIAPHRAGM-ASSY-N

