

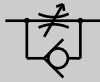


Miniature speed control valve SC-M3/M5

Compact and light weight for space saving piping. Low speed and fine speed type are also available.

JIS symbol

SC-M5-S
SC-M5-F



SC-M5-L
SC-M5-A



Specifications

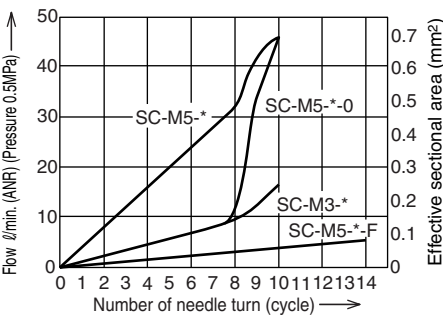
Descriptions	SC-M3-S	SC-M3-L	SC-M3-F	SC-M3-A	SC-M5-S	SC-M5-L	SC-M5-F	SC-M5-A	
Working fluid	Compressed air								
Max. working pressure MPa	0.7								
Min. working pressure MPa	0.1								
Withstanding pressure MPa	1.05								
Fluid temperature °C	5 to 60 (no freezing) Note 1								
Ambient temperature °C	0 to 60 (no freezing)								
Port size	M3				M5				
Product weight g	1.7	1.5	2.4	2.4	5.6 (6)	4.8 (5.2)	7.9 (8.3)	8.5 (8.9)	
Applicable cylinder bore size mm	ø2.5 to ø10				ø6 to ø25				
Number of needle turn	10				10 (14)				
Free flow	Flow ℓ/min. (ANR)	20				53			
	Effective sectional area mm ²	0.3				0.8			
Controlled flow	Flow ℓ/min. (ANR)	16				47 (6.7)			
	Effective sectional area mm ²	0.25				0.7 (0.1)			

Note 1: Freezing could occur by adiabatic expansion depending on air quality (dew point).

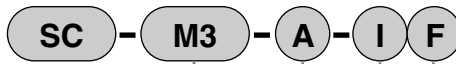
Note 2: Flow rate is the atmospheric pressure conversion value at pressure 0.5MPa.

Note 3: Value in () is for fine speed type.

Flow characteristics



How to order

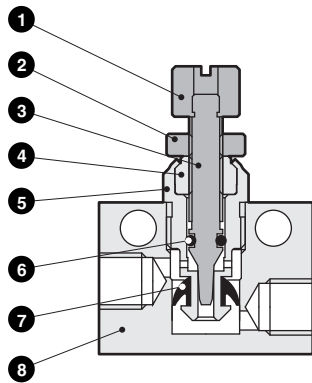


Symbol	Descriptions
A Port size	
M3	M3 × 0.5
M5	M5 × 0.8
B Shape	
S	Straight
L	Elbow
F	Flat
A	Adjustable
C Control method	
Blank	Meter-out type
I	Meter-in type
D Flow characteristics	
Blank	Standard type
O	Low speed type (only M5)
F	Fine speed type (only M5)

Note 1: For fine speed type, outside of lock nut is painted with blue.

Note 2: Model no. of SC-*S-I can not be selected. Install SC-*S with reversing IN and OUT side.

Internal structure and parts list



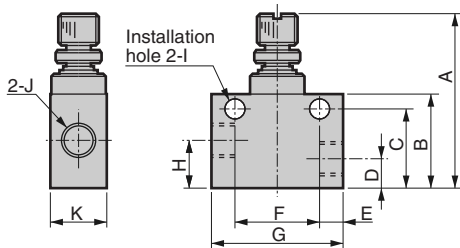
No.	Parts name	Material
1	Knob	Aluminum alloy
2	Lock nut	Aluminum alloy
3	Needle	Stainless steel
4	Needle guide	Aluminum alloy
5	Check bracket	Aluminum alloy
6	O ring	Nitrile rubber
7	Packing seal	Hydrogen nitrile rubber
8	Body	Aluminum alloy

Note: For fine speed type, material of needle guide is stainless steel.

Dimensions

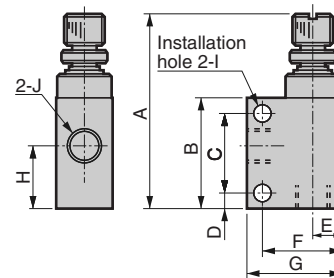


● SC-M3/M5-S (straight)



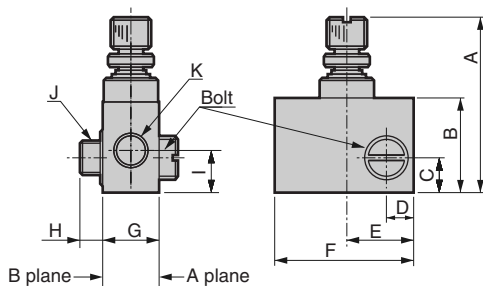
Model no.	A	B	C	D	E	F	G	H	I	J	K
SC-M3-S	18.5 (max21)	9	7.3	2.5	2.5	8	13	4.2	∅2.2	M3×0.5	5
SC-M5-S	25 (max28.5)	13.5	11.2	4.2	3.5	12	19	6.5	∅3.2	M5×0.8	8

● SC-M3/M5-L (elbow)



Model no.	A	B	C	D	E	F	G	H	I	J
SC-M3-L	20.3 (max22.8)	10.5	7	1.9	2.5	6.5	9	5.7	∅2.2	M3×0.5
SC-M5-L	27.5 (max31)	16	11.5	2.2	4.3	11.2	13.5	9	∅3.2	M5×0.8

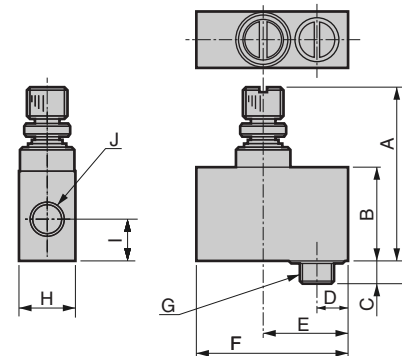
● SC-M3/M5-F (flat)



Model no.	A	B	C	D	E	F	G	H	I	J	K
SC-M3-F	18.5 (max21)	9	3.4	2.7	6.5	13	5	3	4.2	M3×0.5	M3×0.5
SC-M5-F	25 (max28.5)	13.5	5.1	4	10.5	20	8	3.5	6.5	M5×0.8	M5×0.8

Note: The bolt can be removed from the main body and installed from either side the A or B.

● SC-M3/M5-A (adjustable)



Model no.	A	B	C	D	E	F	G	H	I	J
SC-M3-A	18.5 (max21)	9	3	3.2	8	14.5	M3×0.5	5	4.2	M3×0.5
SC-M5-A	25 (max28.5)	13.5	3.5	4.5	12.5	22	M5×0.8	8	6.5	M5×0.8

Refrigerating type dryer
Desiccant type dryer
High polymer membrane type dryer
Air filter
Auto. drain / others
F.R.L. (Module unit)
F.R.L. (Separate)
Compact F.R.
Precise regulator
F.R.L. (Related products)
Clean F.R.
Electro pneumatic regulator
Air booster
Speed control valve
Silencer
Check valve / others
Joint / tube
Vacuum filter
Vacuum regulator
Suction plate
Magnetic spring buffer
Mechanical pressure SW
Electronic pressure SW
Contact / close contact cont. SW
Air sensor
Pressure SW for coolant
Small flow sensor
Small flow controller
Flow sensor for air
Flow sensor for water
Total air system
Total air system (Gamma)

Ending

Miniature Speed control valve