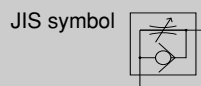


Speed control valve Direct piping elbow type

SC3R Series

● Port size: M5, Rc1/8 to Rc1/2

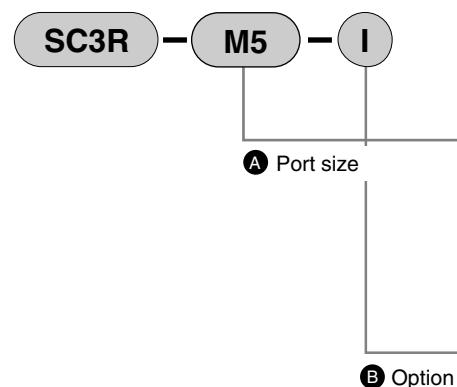


Specifications

Descriptions	SC3R-M5	SC3R-6	SC3R-8	SC3R-10	SC3R-15	
Working fluid	Compressed air					
Max. working pressure MPa	1.0					
Min. working pressure MPa	0.05					
Withstanding pressure MPa	1.5					
Fluid temperature °C	5 to 60 (no freezing) Note 2					
Ambient temperature °C	0 to 60 (no freezing)					
Port size	M5	Rc1/8	Rc1/4	Rc3/8	Rc1/2	
Product weight g	14	40	70	110	190	
Applicable cylinder bore size mm	ø6 to ø16	ø15 to ø32	ø20 to ø50	ø32 to ø75	ø40 to ø110	
Number of needle turn	11	14	14	14	16	
Free flow	Flow ℓ/min. (ANR)	80	270	500	1100	1600
	Effective sectional area mm ²	1.2	4.0	7.5	16	24
Controlled flow	Flow ℓ/min. (ANR)	47	240	470	1100	1600
	Effective sectional area mm ²	0.7	3.6	7.0	15	24

Note 1: Flow rate is the atmospheric pressure conversion value at pressure 0.5MPa.

Note 2: Freezing could occur by adiabatic expansion depending on air quality (dew point).



Symbol	Descriptions
A Port size	
M5	M5 × 0.8
6	Rc1/8
8	Rc1/4
10	Rc3/8
15	Rc1/2
B Option	
I	Meter-in type
Blank	Meter-out type

Ozone specifications (Ending 9)

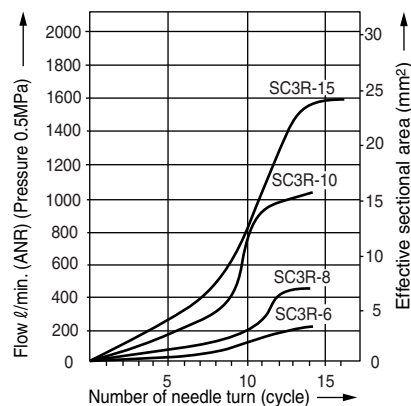
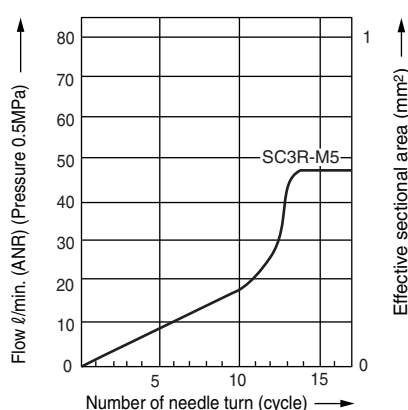
SC3R----- P11

Clean room specifications (catalog No. CB-033SA)

● Dust generation preventing structure for use in cleanrooms

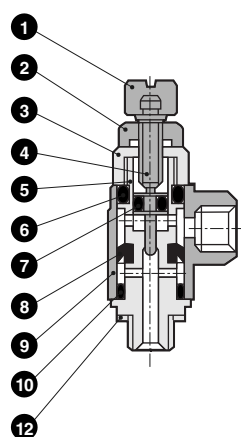
SC3R----- P7*

Flow characteristics

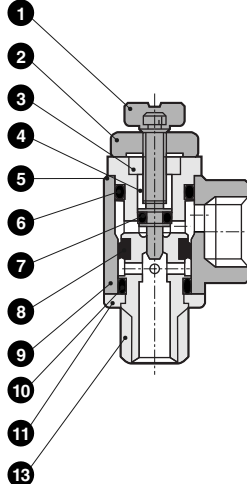


Internal structure and parts list

● SC3R-M5



● SC3R-6 to 15

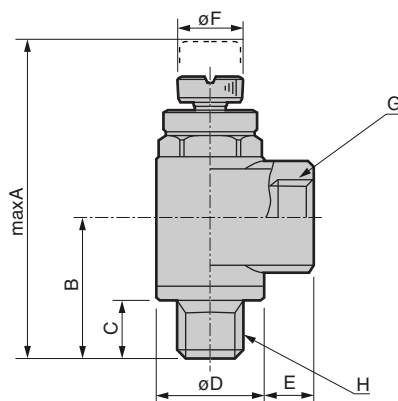


No.	Parts name	Material
1	Knob	Brass
2	Lock nut	Brass
3	Gland nut	Brass
4	Needle	Stainless steel
5	Rotary shaft	Brass
6	O ring	Nitrile rubber
7	O ring	Nitrile rubber
8	Packing seal	Hydrogen nitrile rubber
9	Rotor	Zinc alloy die casting (brass)
10	O ring	Nitrile rubber
11	Snap ring	PBT resin
12	M5 gasket	Nitrile rubber + steel
13	Sealant	Fluorine system resin

* Material in () is for SC3R-M5

* All the brass parts are plated with electroless nickeling

Dimensions



Model no.	A	B	C	D	E	F	G	H
SC3R-M5	33.4	13.5	4.0	10.0	4.7	6	M5 × 0.8	M5 × 0.8
SC3R-6	42.5	18.8	7.7	15.0	6.7	9	Rc1/8	R1/8
SC3R-8	51.2	23.2	10.7	19.0	9.4	12	Rc1/4	R1/4
SC3R-10	60.2	27.0	11.7	22.5	10.0	14	Rc3/8	R3/8
SC3R-15	66.7	30.0	14.7	27.0	13.7	16	Rc1/2	R1/2

Refrigerating type dryer
Desiccant type dryer
High polymer membrane type dryer
Air filter
Auto. drain / others
F.R.L. (Module unit)
F.R.L. (Separate)
Compact F.R.
Precise regulator
F.R.L. (Related products)
Clean F.R.
Electro pneumatic regulator
Air booster
Speed control valve
Silencer
Check valve / others
Joint / tube
Vacuum filter
Vacuum regulator
Suction plate
Magnetic spring buffer
Mechanical pressure SW
Electronic pressure SW
Contact / close contact cont. SW
Air sensor
Pressure SW for coolant
Small flow sensor
Small flow controller
Flow sensor for air
Flow sensor for water
Total air system
Total air system (Gamma)

Ending

Direct piping elbow type
Speed control valve