

# TWO-TOUCH FITTING

## Application

- Nut-tightened air connector used for pneumatic piping.

## Feature

- Effective use at the place of vibration or rocking.
- Long life-span made of plastic.
- Excellent in anti-corrosion and anti-chemicals.

## Specification

Fluid	Air(No other gases or liquids)	
Working Pressure Range	0~150PSI	0~9Kgf/cm <sup>2</sup> (0~900kPa)
Negative Pressure	-29.50 in Hg	-750mmHg(10Torr)
Temperature Range	32~140° F	0~60° C
Applicable Tube Material	Polyurethane and Nylon	



## Product Code System

**TC 04 - 01**

①      ②      ③

(1) Type

Code	Metric Size				
	TC	TL	TUT	THT	THL
Type	STRAIGHT	ELBOW	UNION	TEE	ELBOW
				ROTATION	

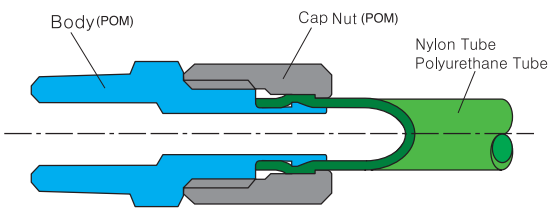
(2) Tube Dia(∅D)

Code	04	06	08	10	12
Dia	∅4 × ∅2.5	∅6 × ∅4	∅8 × ∅5.5	∅10 × ∅6.5	∅12 × ∅8

(3) Thread Size(T)

Code	Thread Size			
	01	02	03	04
Size	R1/8	R1/4	R3/8	R1/2

## Structural Diagram

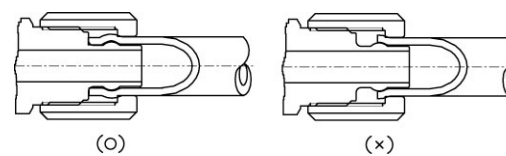


## Two -Touch Fitting



## CAUTION

- Be sure to read the "Common Precautions" and "Using Precautions of Fitting Series" (P6) before using.
- Fastening the cap by force will cause damage on thread or body.
- Push the tube fully into the end when connecting.
- Cut the used part of tube after using once.
- Seal with teflon, failure to do so will cause air leakage.



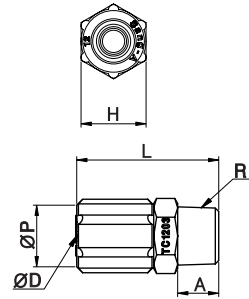
## TC

Straight



MODEL [ØD-T]

Tube (Metric) - Thread(R)		
MODEL	ØD	R
TC 04-01	4	R1/8
TC 04-02	4	R1/4
TC 06-01	6	R1/8
TC 06-02	6	R1/4
TC 08-01	8	R1/8
TC 08-02	8	R1/4
TC 08-03	8	R3/8
TC 10-02	10	R1/4
TC 10-03	10	R3/8
TC 12-03	12	R3/8
TC 12-04	12	R1/2



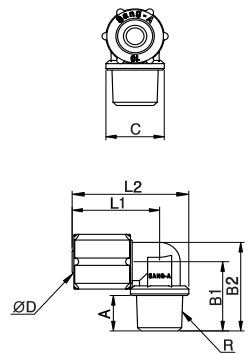
## TL

Elbow



MODEL [ØD-T]

Tube (Metric) - Thread(R)		
MODEL	ØD	R
TL 04-01	4	R1/8
TL 04-02	4	R1/4
TL 06-01	6	R1/8
TL 06-02	6	R1/4
TL 08-01	8	R1/8
TL 08-02	8	R1/4
TL 08-03	8	R3/8
TL 10-02	10	R1/4
TL 10-03	10	R3/8
TL 12-03	12	R3/8
TL 12-04	12	R1/2



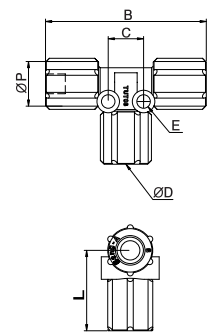
## TUT

Union Tee



MODEL [ØD-T]

Tube (Metric) - Thread(R)		
MODEL	ØD	R
TUT 04	4	
TUT 06	6	
TUT 08	8	
TUT 10	10	
TUT 12	12	



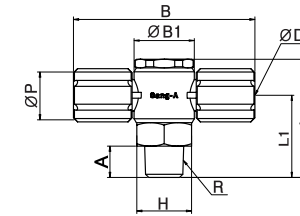
## THT (D1)

Single Universal Tee



MODEL [ØD-T]

Tube (Metric) - Thread(R)		
MODEL	ØD	R
THT 0401-D1	4	R1/8
THT 0402-D1	4	R1/4
THT 0601-D1	6	R1/8
THT 0602-D1	6	R1/4
THT 0801-D1	8	R1/8
THT 0802-D1	8	R1/4
THT 0803-D1	8	R3/8
THT 1002-D1	10	R1/4
THT 1003-D1	10	R3/8
THT 1004-D1	10	R1/2
THT 1202-D1	12	R1/4
THT 1203-D1	12	R3/8
THT 1204-D1	12	R1/2



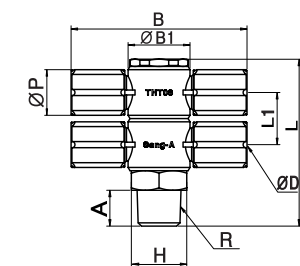
## THT (D2)

Double Universal Tee



MODEL [ØD-T]

Tube (Metric) - Thread(R)		
MODEL	ØD	R
THT 0401-D2	4	R1/8
THT 0402-D2	4	R1/4
THT 0601-D2	6	R1/8
THT 0602-D2	6	R1/4
THT 0801-D2	8	R1/8
THT 0802-D2	8	R1/4
THT 0803-D2	8	R3/8
THT 1002-D2	10	R1/4
THT 1003-D2	10	R3/8
THT 1004-D2	10	R1/2
THT 1202-D2	12	R1/4
THT 1203-D2	12	R3/8
THT 1204-D2	12	R1/2



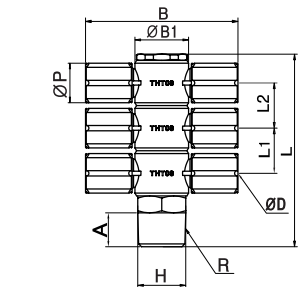
## THT (D3)

Triple Universal Tee



MODEL [ØD-T]

Tube (Metric) - Thread(R)		
MODEL	ØD	R
THT 0401-D3	4	R1/8
THT 0402-D3	4	R1/4
THT 0601-D3	6	R1/8
THT 0602-D3	6	R1/4
THT 0801-D3	8	R1/8
THT 0802-D3	8	R1/4
THT 0803-D3	8	R3/8
THT 1002-D3	10	R1/4
THT 1003-D3	10	R3/8
THT 1004-D3	10	R1/2
THT 1202-D3	12	R1/4
THT 1203-D3	12	R3/8
THT 1204-D3	12	R1/2



### THL(D1)

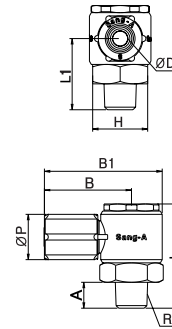
Single Universal Elbow



MODEL[ ØD-T ]

Tube (Metric) - Thread(R)

MODEL	ØD	R
THL 0401-D1	4	R1/8
THL 0402-D1	4	R1/4
THL 0601-D1	6	R1/8
THL 0602-D1	6	R1/4
THL 0801-D1	8	R1/8
THL 0802-D1	8	R1/4
THL 0803-D1	8	R3/8
THL 1002-D1	10	R1/4
THL 1003-D1	10	R3/8
THL 1004-D1	10	R1/2
THL 1202-D1	12	R1/4
THL 1203-D1	12	R3/8
THL 1204-D1	12	R1/2



### THL(D2)

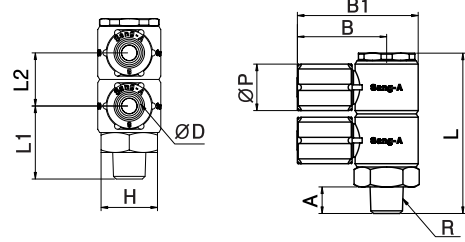
Double Universal Elbow



MODEL[ ØD-T ]

Tube (Metric) - Thread(R)

MODEL	ØD	R
THL 0401-D2	4	R1/8
THL 0402-D2	4	R1/4
THL 0601-D2	6	R1/8
THL 0602-D2	6	R1/4
THL 0801-D2	8	R1/8
THL 0802-D2	8	R1/4
THL 0803-D2	8	R3/8
THL 1002-D2	10	R1/4
THL 1003-D2	10	R3/8
THL 1004-D2	10	R1/2
THL 1202-D2	12	R1/4
THL 1203-D2	12	R3/8
THL 1204-D2	12	R1/2



### THT(D3)

Triple Universal Elbow



MODEL[ ØD-T ]

Tube (Metric) - Thread(R)

MODEL	ØD	R
THL 0401-D3	4	R1/8
THL 0402-D3	4	R1/4
THL 0601-D3	6	R1/8
THL 0602-D3	6	R1/4
THL 0801-D3	8	R1/8
THL 0802-D3	8	R1/4
THL 0803-D3	8	R3/8
THL 1002-D3	10	R1/4
THL 1003-D3	10	R3/8
THL 1004-D3	10	R1/2
THL 1202-D3	12	R1/4
THL 1203-D3	12	R3/8
THL 1204-D3	12	R1/2

